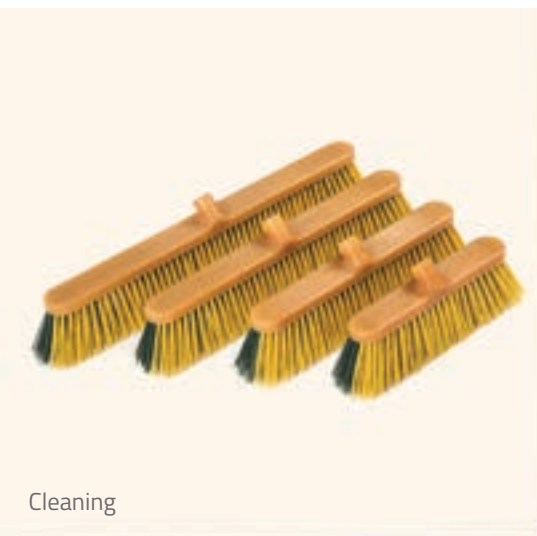
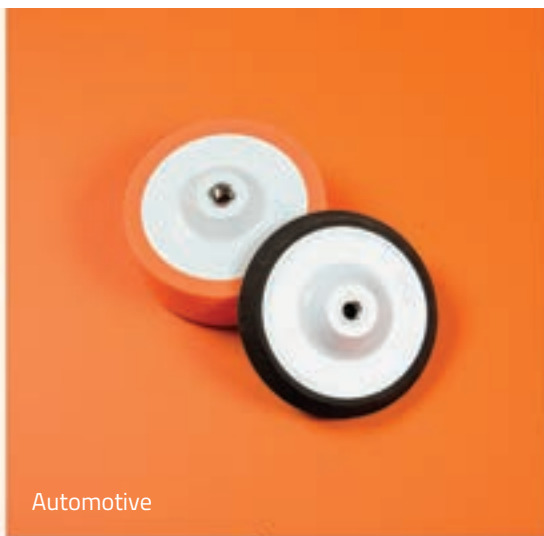


dekor.com

Product Catalogue



Cleaning



Automotive



Construction



Decoration



Paint Application



You can follow our newest products, fairs, and main dealers from **dekor.com**



***New** synthetic brushes are put up for sale!*

Page. 16



Paint Application

Easy to use efficient tools for Interior and exterior wall paint applications.

Page 4-41



Cleaning Products

Cleaning products meet all industrial, wholesale and retail needs of institutions and organizations as the manufacturer with the latest technology.

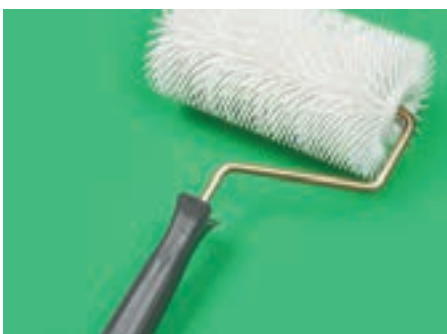
Page 42-47



Decoration Products

Decorative building products continue to be a part of your housework with their trend designs having high level of visual richness.

Page 48-54



Construction Products

Building products are one of the first names that come to mind as manufacturers of solid and quality materials that are compatible with today's technology.

Page 55-67



Automotive Products

Polishing and paste applications are produced with the latest technology helps you protect cars and yachts surfaces.

Page 68-72



Stands

Our stands, which are specially designed for you, continue to be irreplaceable furniture of your work place.

*The products on the stand are sold on normal conditions. The part of the stand is free of charge.

Page 73-85

6083

3,1" / 80 mm

OIL PAINT

BRUSHES

Specially designed for
all types of paint.

OIL PAINT BRUSHES



6061

1.6" / 40 mm

12 in a box

Plastic and wood mixed comfortable handle provides a smooth application and ergonomic hold.

Special formula helps holds more paint.

6062

2.3" / 60 mm

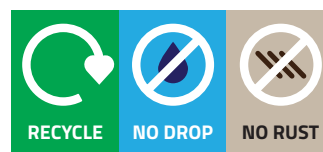
12 in a box

Long bristle length provides a comfortable soft paint application without trace.

6060

0.8" / 20 mm

12 in a box



It is manufactured without the use of metal.

Paint Cup

1392

Page 38



6064

4" / 100 mm

12 in a box

6063

3.1" / 80 mm

12 in a box

- Specially designed for all types of paint.
- It is manufactured without the use of metal, no risk of corrosion.
- Comfortable handle provides a smooth application, without a trace and ergonomic hold.
- Not affected by solvent, long-lasting and never drops bristle.
- Easy storage package helps for long lasting.

| Code | Width | Box |
|------|--------------|-----|
| 6060 | 0.8" / 20 mm | 12 |
| 6061 | 1.6" / 40 mm | 12 |
| 6062 | 2.3" / 60 mm | 12 |
| 6063 | 3.1" / 80 mm | 12 |
| 6064 | 4" / 100 mm | 12 |

OIL PAINT

ROBOT BRUSHES



Swivel head helps you adjust desired angle.



6072
2,3" / 60 mm
12 in a box

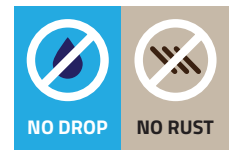
6070
0,8" / 20 mm
12 in a box



6071
1,6" / 40 mm
12 in a box



6074
4" / 100 mm
12 in a box



It is manufactured without the use of metal.

By means of poles, it can be reached to the desired edge points.
Page: 41



6073
3,1" / 80 mm
12 in a box

- Specially designed with swivel head, use for all types of painting.
- It is manufactured without the use of metal, no risk of corrosion.
- Comfortable handle provides a smooth application, without a trace and ergonomic hold.
- Not affected by solvent, long-lasting and never drops bristle.
- Easy storage package helps for long lasting.

| Code | Width | Box |
|------|--------------|-----|
| 6070 | 0.8" / 20 mm | 12 |
| 6071 | 1.6" / 40 mm | 12 |
| 6072 | 2.3" / 60 mm | 12 |
| 6073 | 3.1" / 80 mm | 12 |
| 6074 | 4" / 100 mm | 12 |

OIL PAINT REACH BRUSHES



Plastic and wood mixed comfortable handle provides a smooth application and ergonomic hold.

6081

| |
|--------------|
| 1.6" / 40 mm |
| 12 in a box |

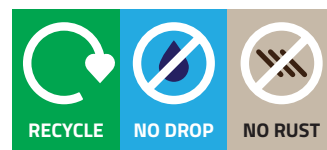
For the back parts of radiators and all points where you cannot reach.

Special formula helps holds more paint.

Long bristle length provides a comfortable soft paint application without trace.

6080

| |
|--------------|
| 0.8" / 20 mm |
| 12 in a box |



It is manufactured without the use of metal.



6084

| |
|-------------|
| 4" / 100 mm |
| 12 in a box |



6083

| |
|--------------|
| 3.1" / 80 mm |
| 12 in a box |



6082

| |
|--------------|
| 2.3" / 60 mm |
| 12 in a box |

- It is used for painting all unreachable points and back places of radiators.
- It is manufactured without the use of metal, no risk of corrosion.
- Comfortable handle provides a smooth application, without a trace and ergonomic hold.
- Not affected by solvent, long-lasting and never drops bristle.
- Easy storage package helps for long lasting.

| Code | Width | Box |
|------|--------------|-----|
| 6080 | 0.8" / 20 mm | 12 |
| 6081 | 1.6" / 40 mm | 12 |
| 6082 | 2.3" / 60 mm | 12 |
| 6083 | 3.1" / 80 mm | 12 |
| 6084 | 4" / 100 mm | 12 |



EXTRA CHIP

PAINT BRUSHES

Specially designed for all
types of paint.

EXTRA CHIP

PAINT BRUSHES



Plastic and wood mixed comfortable handle provides a smooth application and ergonomic hold.

6031

| |
|--------------|
| 1.6" / 40 mm |
| 12 in a box |

Special formula helps holds more paint.

6032

| |
|--------------|
| 2.3" / 60 mm |
| 12 in a box |



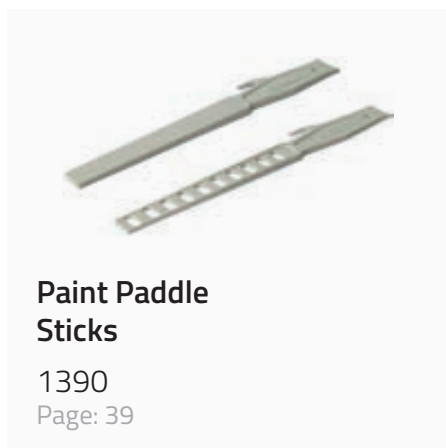
6030

| |
|--------------|
| 0.8" / 20 mm |
| 12 in a box |

Long bristle length provides a comfortable soft paint application without trace.



It is manufactured without the use of metal.



Paint Paddle Sticks

1390

Page: 39



6034

| |
|-------------|
| 4" / 100 mm |
| 12 in a box |



6033

| |
|--------------|
| 3.1" / 80 mm |
| 12 in a box |

- Specially designed for all types of paint.
- It is manufactured without the use of metal, no risk of corrosion.
- Comfortable handle provides a smooth application, without a trace and ergonomic hold.
- Not affected by solvent, long-lasting and never drops bristle.
- Easy storage package helps for long lasting.

| Code | Width | Box |
|------|--------------|-----|
| 6030 | 0.8" / 20 mm | 12 |
| 6031 | 1.6" / 40 mm | 12 |
| 6032 | 2.3" / 60 mm | 12 |
| 6033 | 3.1" / 80 mm | 12 |
| 6034 | 4" / 100 mm | 12 |

EXTRA CHIP

ROBOT PAINT BRUSHES



Swivel head helps you adjust desired angle.



6042

| |
|--------------|
| 2,3" / 60 mm |
| 12 in a box |

6040

| |
|--------------|
| 0.8" / 20 mm |
| 12 in a box |



6041

| |
|--------------|
| 1.6" / 40 mm |
| 12 in a box |



It is manufactured without the use of metal.

By means of poles, it can be reached to the desired edge points.
Page: 41



6044

| |
|-------------|
| 4" / 100 mm |
| 12 in a box |

6043

| |
|--------------|
| 3,1" / 80 mm |
| 12 in a box |



- Specially designed with swivel head, use for all types of painting.
- It is manufactured without the use of metal, no risk of corrosion.
- Comfortable handle provides a smooth application, without a trace and ergonomic hold.
- Not affected by solvent, long-lasting and never drops bristle.
- Easy storage package helps for long lasting.

| Code | Width | Box |
|------|--------------|-----|
| 6040 | 0.8" / 20 mm | 12 |
| 6041 | 1.6" / 40 mm | 12 |
| 6042 | 2.3" / 60 mm | 12 |
| 6043 | 3.1" / 80 mm | 12 |
| 6044 | 4" / 100 mm | 12 |

EXTRA CHIP

REACH PAINT BRUSHES

Plastic and wood mixed comfortable handle provides a smooth application and ergonomic hold.

6051

| |
|--------------|
| 1.6" / 40 mm |
| 12 in a box |

For the back parts of radiators and all points where you cannot reach.

Special formula helps holds more paint.

Long bristle length provides a comfortable soft paint application without trace.

6050

| |
|--------------|
| 0.8" / 20 mm |
| 12 in a box |



It is manufactured without the use of metal.

6054

| |
|-------------|
| 4" / 100 mm |
| 12 in a box |

6053

| |
|--------------|
| 3.1" / 80 mm |
| 12 in a box |

6052

| |
|--------------|
| 2.3" / 60 mm |
| 12 in a box |

- It is used for painting all unreachable points and back places of radiators.
- It is manufactured without the use of metal, no risk of corrosion.
- Comfortable handle provides a smooth application, without a trace and ergonomic hold.
- Not affected by solvent, long-lasting and never drops bristle.
- Easy storage package helps for long lasting.

| Code | Width | Box |
|------|--------------|-----|
| 6050 | 0.8" / 20 mm | 12 |
| 6051 | 1.6" / 40 mm | 12 |
| 6052 | 2.3" / 60 mm | 12 |
| 6053 | 3.1" / 80 mm | 12 |
| 6054 | 4" / 100 mm | 12 |

CHIP

PAINT BRUSHES



CHIP PAINT BRUSHES



Plastic and wood mixed comfortable handle provides a smooth application and ergonomic hold.

Special formula helps holds more paint.

Long bristle length provides a comfortable soft paint application without trace.



It is manufactured without the use of metal.



6000

| |
|--------------|
| 0.8" / 20 mm |
| 12 in a box |



6001

| |
|--------------|
| 1.6" / 40 mm |
| 12 in a box |



6004

| |
|-------------|
| 4" / 100 mm |
| 12 in a box |



6003

| |
|--------------|
| 3.1" / 80 mm |
| 12 in a box |



6002

| |
|--------------|
| 2.3" / 60 mm |
| 12 in a box |

- Specially designed for all types of paint.
- It is manufactured without the use of metal, no risk of corrosion.
- Comfortable handle provides a smooth application, without a trace and ergonomic hold.
- Not affected by solvent, long-lasting and never drops bristle.
- Easy storage package helps for long lasting.

| Code | Width | Box |
|------|--------------|-----|
| 6000 | 0.8" / 20 mm | 12 |
| 6001 | 1.6" / 40 mm | 12 |
| 6002 | 2.3" / 60 mm | 12 |
| 6003 | 3.1" / 80 mm | 12 |
| 6004 | 4" / 100 mm | 12 |

CHIP

ROBOT PAINT BRUSHES



Swivel head helps you adjust desired angle.



6012
2,3" / 60 mm
12 in a box

6010
0,8" / 20 mm
12 in a box



6011
1,6" / 40 mm
12 in a box



It is manufactured without the use of metal.

By means of poles, it can be reached to the desired edge points.
Page: 41



6014
4" / 100 mm
12 in a box



6013
3,1" / 80 mm
12 in a box

- Specially designed with swivel head, use for all types of painting.
- It is manufactured without the use of metal, no risk of corrosion.
- Comfortable handle provides a smooth application, without a trace and ergonomic hold.
- Not affected by solvent, long-lasting and never drops bristle.
- Easy storage package helps for long lasting.

| Code | Width | Box |
|------|--------------|-----|
| 6010 | 0.8" / 20 mm | 12 |
| 6011 | 1.6" / 40 mm | 12 |
| 6012 | 2.3" / 60 mm | 12 |
| 6013 | 3.1" / 80 mm | 12 |
| 6014 | 4" / 100 mm | 12 |

CHIP

REACH PAINT BRUSHES



Plastic and wood mixed comfortable handle provides a smooth application and ergonomic hold.

6021

| |
|--------------|
| 1.6" / 40 mm |
| 12 in a box |

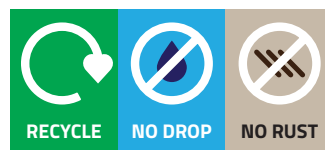
For the back parts of radiators and all points where you cannot reach.

Special formula helps holds more paint.

Long bristle length provides a comfortable soft paint application without trace.

6020

| |
|--------------|
| 0.8" / 20 mm |
| 12 in a box |



It is manufactured without the use of metal.



6024

| |
|-------------|
| 4" / 100 mm |
| 12 in a box |



6023

| |
|--------------|
| 3.1" / 80 mm |
| 12 in a box |



6022

| |
|--------------|
| 2.3" / 60 mm |
| 12 in a box |

- It is used for painting all unreachable points and back places of radiators.
- It is manufactured without the use of metal, no risk of corrosion.
- Comfortable handle provides a smooth application, without a trace and ergonomic hold.
- Not affected by solvent, long-lasting and never drops bristle.
- Easy storage package helps for long lasting.

| Code | Width | Box |
|------|--------------|-----|
| 6020 | 0.8" / 20 mm | 12 |
| 6021 | 1.6" / 40 mm | 12 |
| 6022 | 2.3" / 60 mm | 12 |
| 6023 | 3.1" / 80 mm | 12 |
| 6024 | 4" / 100 mm | 12 |

SYNTHETIC

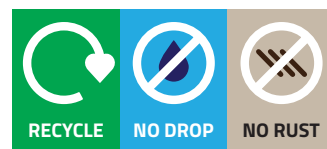
PAINT BRUSHES

It has been specially designed for the metal painting of interior and exterior parts of buildings.

SYNTHETIC PAINT BRUSHES



Plastic and wood mixed comfortable handle provides a smooth application and ergonomic hold.



It is manufactured without the use of metal.

6101

1.6" / 40 mm

12 in a box

Long bristle length provides a comfortable soft paint application without trace.

Special formula helps holds more paint.

6100

0.8" / 20 mm

12 in a box



6104

4" / 100 mm

12 in a box



6103

3,1" / 80 mm

12 in a box



6102

2,3" / 60 mm

12 in a box

- Specially designed for synthetic paint.
- It is manufactured without the use of metal, no risk of corrosion.
- Comfortable handle provides a smooth application, without a trace and ergonomic hold.
- Not affected by solvent, long-lasting and never drops bristle.
- Easy storage package helps for long lasting.

| Code | Width | Box |
|------|--------------|-----|
| 6100 | 0.8" / 20 mm | 12 |
| 6101 | 1.6" / 40 mm | 12 |
| 6102 | 2.3" / 60 mm | 12 |
| 6103 | 3.1" / 80 mm | 12 |
| 6104 | 4" / 100 mm | 12 |

SYNTHETIC ROBOT

PAINT BRUSHES



Swivel head helps you adjust desired angle.



6112
2,3" / 60 mm
12 in a box

6110
0.8" / 20 mm
12 in a box



6111
1.6" / 40 mm
12 in a box



It is manufactured without the use of metal.

By means of poles, it can be reached to the desired edge points.
Page: 41



6114
4" / 100 mm
12 in a box



6113
3,1" / 80 mm
12 in a box

- Specially designed with robot swivel head, use synthetic painting.
- It is manufactured without the use of metal, no risk of corrosion.
- Comfortable handle provides a smooth application, without a trace and ergonomic hold.
- Not affected by solvent, long-lasting and never drops bristle.
- Easy storage package helps for long lasting.

| Code | Width | Box |
|------|--------------|-----|
| 6110 | 0.8" / 20 mm | 12 |
| 6111 | 1.6" / 40 mm | 12 |
| 6112 | 2.3" / 60 mm | 12 |
| 6113 | 3.1" / 80 mm | 12 |
| 6114 | 4" / 100 mm | 12 |

SYNTHETIC REACH

PAINT BRUSHES



Plastic and wood mixed comfortable handle provides a smooth application and ergonomic hold.

6121
1.6" / 40 mm
12 in a box

Long bristle length provides a comfortable soft paint application without trace.



6120
0.8" / 20 mm
12 in a box

For all points where you cannot reach.

Special formula helps holds more paint.



It is manufactured without the use of metal.



6124
4" / 100 mm
12 in a box



6123
3.1" / 80 mm
12 in a box



6122
2.3" / 60 mm
12 in a box

- It is used for painting all unreachable points.
- It is manufactured without the use of metal, no risk of corrosion.
- Comfortable handle provides a smooth application, without a trace and ergonomic hold.
- Not affected by solvent, long-lasting and never drops bristle.
- Easy storage package helps for long lasting.

| Code | Width | Box |
|------|--------------|-----|
| 6120 | 0.8" / 20 mm | 12 |
| 6121 | 1.6" / 40 mm | 12 |
| 6122 | 2.3" / 60 mm | 12 |
| 6123 | 3.1" / 80 mm | 12 |
| 6124 | 4" / 100 mm | 12 |

SYNTHETIC VARNISH

BRUSHES



SYNTHETIC VARNISH BRUSHES



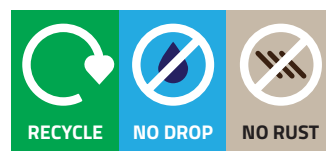
Plastic and wood mixed comfortable handle provides a smooth application and ergonomic hold.

6131

1.6" / 40 mm

12 in a box

Long bristle length provides a comfortable soft paint application without trace.



It is manufactured without the use of metal.

Special formula helps holds more paint.



6130

0.8" / 20 mm

12 in a box



6134

4" / 100 mm

12 in a box



6133

3.1" / 80 mm

12 in a box



6132

2.3" / 60 mm

12 in a box

- Specially designed for synthetic varnish.
- It is manufactured without the use of metal, no risk of corrosion.
- Comfortable handle provides a smooth application, without a trace and ergonomic hold.
- Not affected by solvent, long-lasting and never drops bristle.
- Easy storage package helps for long lasting.

| Code | Width | Box |
|------|--------------|-----|
| 6130 | 0.8" / 20 mm | 12 |
| 6131 | 1.6" / 40 mm | 12 |
| 6132 | 2.3" / 60 mm | 12 |
| 6133 | 3.1" / 80 mm | 12 |
| 6134 | 4" / 100 mm | 12 |

SYNTHETIC VARNISH

ROBOT BRUSHES



Swivel head helps you adjust desired angle.



6142
2,3" / 60 mm
12 in a box

6140
0,8" / 20 mm
12 in a box



6141
1,6" / 40 mm
12 in a box



It is manufactured without the use of metal.

By means of poles, it can be reached to the desired edge points.
Page: 41



6144
4" / 100 mm
12 in a box



6143
3,1" / 80 mm
12 in a box

- Specially designed with robot swivel head, use for synthetic varnish.
- It is manufactured without the use of metal, no risk of corrosion.
- Comfortable handle provides a smooth application, without a trace and ergonomic hold.
- Not affected by solvent, long-lasting and never drops bristle.
- Easy storage package helps for long lasting.

| Code | Width | Box |
|------|--------------|-----|
| 6140 | 0.8" / 20 mm | 12 |
| 6141 | 1.6" / 40 mm | 12 |
| 6142 | 2.3" / 60 mm | 12 |
| 6143 | 3.1" / 80 mm | 12 |
| 6144 | 4" / 100 mm | 12 |

SYNTHETIC VARNISH REACH BRUSHES



Plastic and wood mixed comfortable handle provides a smooth application and ergonomic hold.

6151

1.6" / 40 mm
12 in a box

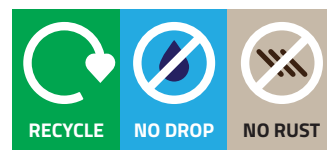
Long bristle length provides a comfortable soft paint application without trace.

6150

0.8" / 20 mm
12 in a box

For all points where you cannot reach.

Special formula helps holds more paint.



It is manufactured without the use of metal.



6154

4" / 100 mm
12 in a box



6153

3.1" / 80 mm
12 in a box



6152

2.3" / 60 mm
12 in a box

- It is used for painting all unreachable points.
- It is manufactured without the use of metal, no risk of corrosion.
- Comfortable handle provides a smooth application, without a trace and ergonomic hold.
- Not affected by solvent, long-lasting and never drops bristle.
- Easy storage package helps for long lasting.

| Code | Width | Box |
|------|--------------|-----|
| 6150 | 0.8" / 20 mm | 12 |
| 6151 | 1.6" / 40 mm | 12 |
| 6152 | 2.3" / 60 mm | 12 |
| 6153 | 3.1" / 80 mm | 12 |
| 6154 | 4" / 100 mm | 12 |

EKSPORT ROLLER

Used on plane faces with satin and water-based paints. Efficiency of the roll, which is not affected by solvents, increases as used. Washing the roll with any solvent after using and rinsing with water prolongs the service life.



Eksport Radiator Roller

| | |
|------|-------------|
| 1084 | 10 cm |
| | 50 in a box |



Eksport Mid-size Roller

| | |
|------|-------------|
| 3113 | 15 cm |
| | 25 in a box |



Eksport Roller

| | |
|------|-------------|
| 1080 | 20 cm |
| | 25 in a box |

| Code | Height (cm) | Box |
|-----------------|-------------|-----|
| Radiator Roller | | |
| 1084 | 10 | 50 |
| 1087 | 7,5 | 50 |
| 2081 | 12,5 | 50 |
| 1085 | 15 | 50 |
| 2082 | 17,5 | 50 |
| 2083 | 20 | 50 |
| 2086 | 25 | 50 |

| Code | Height (cm) | Box |
|-------------------------|-------------|-----|
| Radiator Roller Sleeves | | |
| 1100 | 10 | 50 |
| 1104 | 7,5 | 50 |
| 2181 | 12,5 | 50 |
| 1101 | 15 | 50 |
| 2182 | 17,5 | 50 |
| 2183 | 20 | 50 |
| 2186 | 25 | 50 |

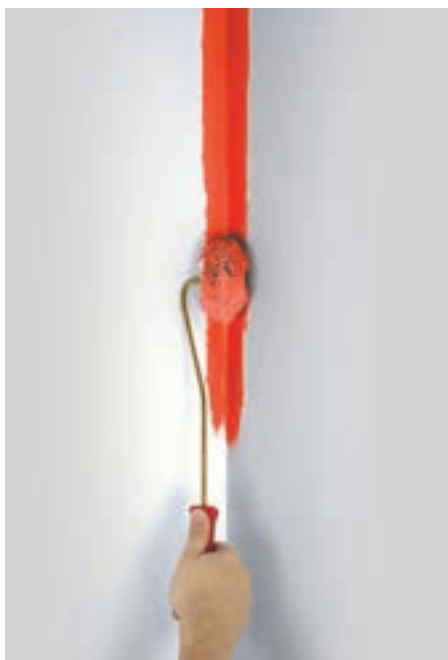
| Code | Height (cm) | Box |
|----------------------|-------------|-----|
| Eksport Robot Roller | | |
| 2084 | 10 | 12 |

| Code | Height (cm) | Box |
|-----------------|-------------|-----|
| Mid-size Roller | | |
| 3111 | 10 | 25 |
| 3112 | 12,5 | 25 |
| 3113 | 15 | 25 |
| 3114 | 17,5 | 25 |
| 3115 | 20 | 25 |
| 3116 | 25 | 25 |

| Code | Height (cm) | Box |
|------------------------|-------------|-----|
| Mid-size Roller Sleeve | | |
| 3011 | 10 | 25 |
| 3012 | 12,5 | 25 |
| 3013 | 15 | 25 |
| 3014 | 17,5 | 25 |
| 3015 | 20 | 25 |
| 3016 | 25 | 25 |

| Code | Height (cm) | Box |
|--------|-------------|-----|
| Roller | | |
| 1081 | 25 | 25 |
| 1080 | 20 | 25 |
| 1082 | 15 | 25 |
| 1083 | 10 | 25 |

| Code | Height (cm) | Box |
|----------------|-------------|-----|
| Roller Sleeves | | |
| 1097 | 25 | 25 |
| 1096 | 20 | 25 |
| 1099 | 15 | 25 |
| 1098 | 10 | 25 |



Ideal for applying paint or drywall to a room's corners. The angled head is ideal for painting gutters or siding around conduit.

Eksport Corner Roller

| | |
|------|------------|
| 1086 | 3,5 cm |
| | 6 in a box |

| Code | Height (cm) | Box |
|---------------------------------|-------------|-----|
| Radiator Roller 12 in a Package | | |
| 2100 | 10 | 12 |

| | | |
|--------------------------------|----|----|
| Radiator Roller 6 in a Package | | |
| 2106 | 10 | 24 |

| | | |
|--------------------------------|----|----|
| Radiator Roller 3 in a Package | | |
| 3100 | 10 | 24 |

| | | |
|----------------------------|----|----|
| Radiator Roller Sleeve Set | | |
| 4100 | 10 | 30 |

| Eksport Roller | | |
|----------------|----|---|
| 1092 | 60 | 6 |
| 1091 | 50 | 6 |
| 1090 | 40 | 6 |
| 1089 | 30 | 6 |

| Eksport Roller Sleeves | | |
|------------------------|----|----|
| 1109 | 60 | 20 |
| 1108 | 50 | 20 |
| 1107 | 40 | 20 |
| 1106 | 30 | 20 |

| Corner Roller | | |
|---------------|-----|---|
| 1086 | 3,5 | 6 |

| | | |
|----------------------|-----|---|
| Corner Roller Sleeve | | |
| 1095 | 3,5 | 6 |

| | | |
|-------------|---|---|
| Pipe Roller | | |
| 1088 | 7 | 6 |

| | | |
|------------------------|---|---|
| Eksport Roller Sleeves | | |
| 1105 | 7 | 6 |



NEW

Eksport Radiator Roller Sleeve
6 in a package

| | |
|------|-------------|
| 2106 | 10 cm |
| | 24 in a box |



| Radiator Roller | Mid-size Roller | Normal Roller |
|-----------------|-----------------|---------------|
| Ø 2,5 cm | Ø 3,5 cm | Ø 5,5 cm |



Eksport Radiator Roller Sleeve
3 in a package

| | |
|------|-------------|
| 3100 | 10 cm |
| | 24 in a box |



Eksport Radiator Roller Sleeve
12 in a package

| | |
|------|-------------|
| 2100 | 10 cm |
| | 12 in a box |

Eksport Tube Roller

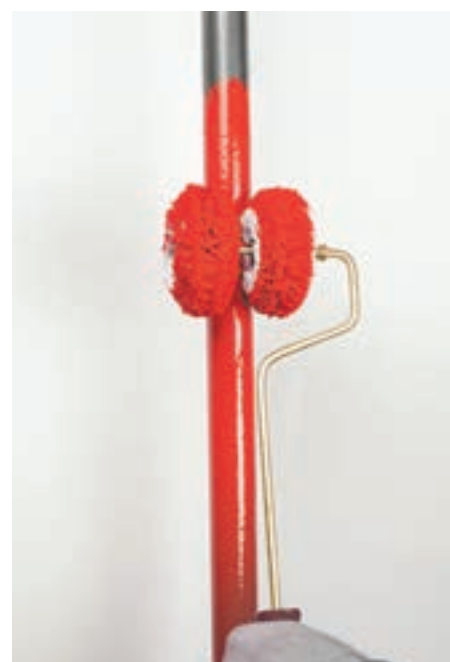
| | |
|------|------------|
| 1088 | 7 cm |
| | 6 in a box |

Pipe roller supports with spring, helps you paint various diameters pipe painting jobs easier.



Eksport Roller

| | |
|------|------------|
| 1089 | 30 cm |
| | 6 in a box |



PLASDEK

ROLLER



PLASDEK ROLLER

Used in plastic interior painting applications. Efficiency of the roll, which is not affected by solvents, increases as used. Washing the roll with any solvent after each use and rinsing with water prolongs the service life. Special types are also produced to be used in polyester application works.

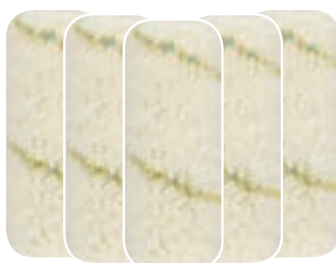


| | |
|------|-------------|
| 1015 | 20 cm |
| | 25 in a box |



Plasdek Roller

| | |
|------|-------------|
| 1019 | 10 cm |
| | 25 in a box |



Plasdek Roller Sleeves

| | |
|------|-------------|
| 1026 | 20 cm |
| | 25 in a box |



Plasdek Roller

| | |
|------|------------|
| 1420 | 30 cm |
| | 6 in a box |

| Code | Height (cm) | Box |
|------|-------------|-----|
| 1017 | 25 | 25 |
| 1015 | 20 | 25 |
| 1018 | 15 | 25 |
| 1019 | 10 | 25 |

Sleeves

| | | |
|------|----|----|
| 1027 | 25 | 25 |
| 1026 | 20 | 25 |
| 1028 | 15 | 25 |
| 1029 | 10 | 25 |

Large Roller

| | | |
|------|----|---|
| 1423 | 60 | 6 |
| 1422 | 50 | 6 |
| 1421 | 40 | 6 |
| 1420 | 30 | 6 |

Large Roller Sleeves

| | | |
|------|----|----|
| 1033 | 60 | 20 |
| 1032 | 50 | 20 |
| 1031 | 40 | 20 |
| 1030 | 30 | 20 |

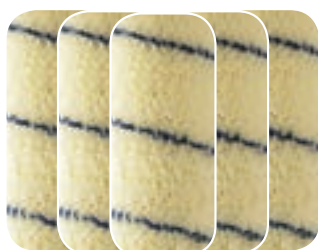
SUPERLUKS

ROLLER

SUPERLUKS ROLLER



| | |
|------|-------------|
| 1001 | 20 cm |
| | 25 in a box |



Superluks
Sleeves

| | |
|------|-------------|
| 1020 | 20 cm |
| | 25 in a box |

| Code | Height (cm) | Box |
|------|-------------|-----|
| 1003 | 25 | 25 |
| 1002 | 23 | 25 |
| 1001 | 20 | 25 |
| 1004 | 15 | 25 |
| 1005 | 10 | 25 |

Sleeves

| | | |
|------|----|----|
| 1022 | 25 | 25 |
| 1021 | 23 | 25 |
| 1020 | 20 | 25 |
| 1023 | 15 | 25 |
| 1024 | 10 | 25 |



Superluks
Roller

| | |
|------|-------------|
| 1005 | 10 cm |
| | 25 in a box |

Superluks Roller is used for external house-paints. Efficiency of the roll, which is not affected by solvents, increases as used. Washing the roll with any solvent after using and rinsing with water prolongs the service life.



SILTEKS

ROLLER



SILTEKS ROLLER



| | |
|------|-------------|
| 1010 | 20 cm |
| | 25 in a box |



Silteks Roller

| | |
|------|-------------|
| 1011 | 23 cm |
| | 25 in a box |

Used with External Silicon paints. Efficiency of the roll, which is not affected by solvents, increases as used. Washing the roll with any solvent after each use and rinsing with water prolongs the service life.



Silteks Roller

| | |
|------|-------------|
| 1012 | 25 cm |
| | 25 in a box |



Silteks Sleeve

| | |
|------|-------------|
| 1013 | 20 cm |
| | 25 in a box |

| Code | Height (cm) | Box |
|------|-------------|-----|
| 1012 | 25 | 25 |
| 1011 | 23 | 25 |
| 1010 | 20 | 25 |

Sleeves

| | | |
|------|----|----|
| 1014 | 25 | 25 |
| 1009 | 23 | 25 |
| 1013 | 20 | 25 |

SHEEPSKIN ROLLER



SHEEPSKIN ROLLER



| | |
|------|-------------|
| 1037 | 15 cm |
| | 12 in a box |

Used in plastic paint and external house-painting applications. Made of natural lamb and sheep fleece.



| Code | Height (cm) | Box |
|------|-------------|-----|
| 1036 | 25 | 12 |
| 1035 | 20 | 12 |
| 1037 | 15 | 12 |
| 1038 | 10 | 12 |

Sleeves

| | | |
|------|----|----|
| 1051 | 25 | 25 |
| 1050 | 20 | 25 |
| 1045 | 15 | 25 |
| 1052 | 10 | 25 |

Extra Sheepskin Roller

| | | |
|------|----|----|
| 1040 | 20 | 12 |
|------|----|----|

Radiator Roller

| | | |
|------|----|----|
| 1039 | 10 | 50 |
|------|----|----|

Radiator Roller Sleeves

| | | |
|------|----|----|
| 1053 | 10 | 50 |
|------|----|----|



Sheepskin Sleeves

| | |
|------|-------------|
| 1050 | 20 cm |
| | 25 in a box |



Sheepskin Roller

| | |
|------|-------------|
| 1038 | 10 cm |
| | 12 in a box |



VELVET
ROLLER

VELVET ROLLER



| | | |
|-----------------|-----------------|---------------|
| Radiator Roller | Mid-size Roller | Normal Roller |
| Ø 2,5 cm | Ø 3,5 cm | Ø 5,5 cm |

Used with varnish and oil paints. Efficiency of the roll, which is not affected by solvents, increases as used. Washing the roll with any solvent after using and rinsing with water prolongs the service life.



Velvet Roller

| | |
|------|-------------|
| 1065 | 20 cm |
| | 25 in a box |



Velvet Mid-size Roller

| | |
|------|-------------|
| 3103 | 15 cm |
| | 25 in a box |



Velvet Radiator Roller

| | |
|------|-------------|
| 1068 | 10 cm |
| | 50 in a box |

| Code | Height (cm) | Box |
|------|-------------|-----|
| 1064 | 25 | 25 |
| 1065 | 20 | 25 |
| 1067 | 15 | 25 |
| 1066 | 10 | 25 |

Sleeves

| | | |
|------|----|----|
| 1075 | 25 | 25 |
| 1076 | 20 | 25 |
| 1077 | 15 | 25 |
| 1078 | 10 | 25 |

Radiator Roller

| | | |
|------|------|----|
| 1068 | 10 | 50 |
| 2091 | 12,5 | 50 |
| 1069 | 15 | 50 |
| 2092 | 17,5 | 50 |
| 2093 | 20 | 50 |
| 2085 | 25 | 50 |

Radiator Roller Sleeves

| | | |
|------|------|----|
| 1079 | 10 | 50 |
| 2191 | 12,5 | 50 |
| 1072 | 15 | 50 |
| 2192 | 17,5 | 50 |
| 2193 | 20 | 50 |
| 2185 | 25 | 50 |

| Code | Height (cm) | Box |
|------|-------------|-----|
| 3101 | 10 | 25 |
| 3102 | 12,5 | 25 |
| 3103 | 15 | 25 |
| 3104 | 17,5 | 25 |
| 3105 | 20 | 25 |
| 3106 | 25 | 25 |

Mid-size Roller Sleeve

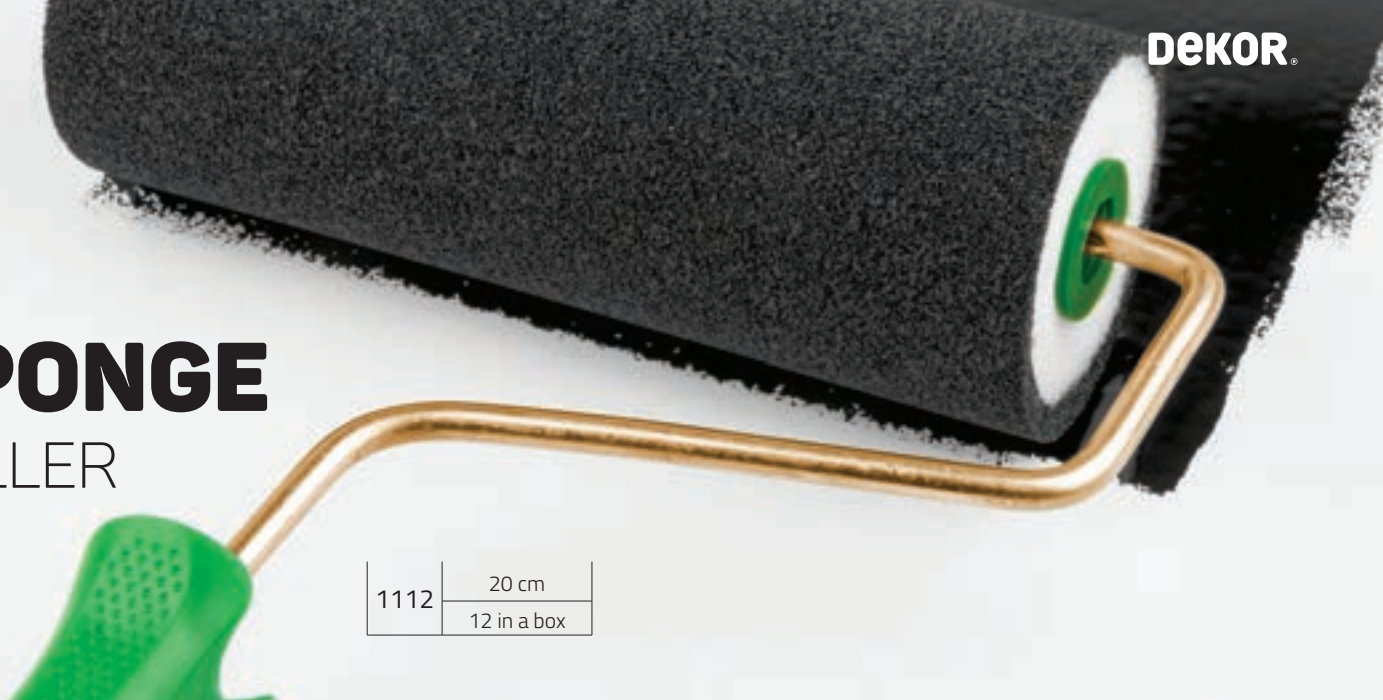
| | | |
|------|------|----|
| 3001 | 10 | 25 |
| 3002 | 12,5 | 25 |
| 3003 | 15 | 25 |
| 3004 | 17,5 | 25 |
| 3005 | 20 | 25 |
| 3006 | 25 | 25 |

SPONGE

ROLLER



SPONGE ROLLER



| | |
|------|-------------|
| 1112 | 20 cm |
| | 12 in a box |



Sponge Roll is used with oil paints. It is not affected by solvents.



Sponge Radiator Roller

| | |
|------|-------------|
| 1111 | 5 cm |
| | 50 in a box |



Sponge Radiator Sleeve

| | |
|------|-------------|
| 1115 | 10 cm |
| | 25 in a box |



Sponge Roller

| | |
|------|-------------|
| 1114 | 10 cm |
| | 25 in a box |



Mini Paint Tray

| | |
|------|----------------------|
| 1184 | 14,5 x 23,5 x 4,5 cm |
| | 12 in a box |

| Code | Height (cm) | Box |
|------|-------------|-----|
| 1113 | 23 | 12 |
| 1112 | 20 | 12 |
| 1114 | 10 | 25 |

Sleeves

| | | |
|------|----|----|
| 1131 | 23 | 25 |
| 1130 | 20 | 25 |
| 1133 | 10 | 25 |

Radiator Roller

| | | |
|------|----|----|
| 1115 | 10 | 25 |
| 1111 | 5 | 50 |

Radiator Roller Sleeves

| | | |
|------|----|----|
| 1132 | 10 | 50 |
| 1134 | 5 | 50 |

PAINT ACCESSORIES



Large Painter Set

| | |
|------|-----------------|
| 1180 | 35 x 50 x 21 cm |
| | 4 in a box |

Functional painter's container with 11 liter volume consisting of 3 pieces is now included in Products range. Includes 2-cell tankard and painter's grid attachable on large painter's container. Tankard consists of brush keeping cell and paint cell.



Hobby Paint Set

| | |
|------|----------------------|
| 1182 | 14,5 x 23,5 x 4,5 cm |
| | 12 in a box |

- Paint Tray
- 5 cm Foam Roller
- 5 cm Foam Roller Sleeve
- Number 10 Pencil Brush
- 20 mm Paint Brush



Amateur Paint Set

| | |
|------|-------------------|
| 1190 | 32 x 40 x 10,5 cm |
| | 2 in a box |

- Paint Tray
- 20 cm Eksport Paint Roller
- 10 cm Eksport Radiator Roller
- 60 mm Paint Brush
- 10 meter Plastic Sheet



Paint Cup

| | |
|------|---------------------|
| 1392 | 10,2 x 21 x 11,8 cm |
| | 6 in a box |

Mini Paint Tray

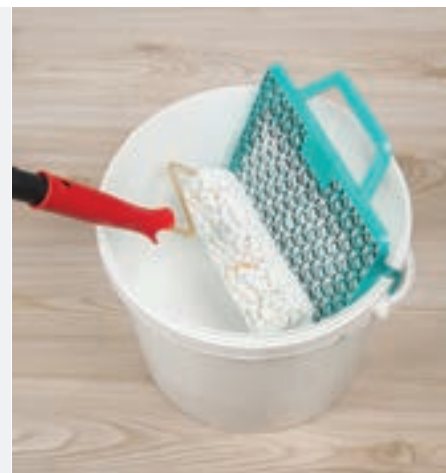
| | |
|------|----------------------|
| 1184 | 14,5 x 23,5 x 4,5 cm |
| | 12 in a box |



NEW

Paint Roller Grid

| | |
|------|----------------|
| 1185 | 26 x 34 x 4 cm |
| | 24 in a box |



Paint Roller Grid can be used comfortably with 25 cm wide paint rollers. Flexible side straps allows the possibility of adaptable different to the bucket.



Robot Brush

| | |
|------|-------------|
| 1188 | 18 cm |
| | 12 in a box |

Facilitates paint applications in narrow and difficult areas where shortcut is required with the adjustable movable head inserted on the rod end without a stair needed.

Paint Paddle Sticks

| | |
|------|-------------|
| 1390 | 33 cm |
| | 40 in a box |



Paint Paddle Sticks (Perforated)

| | |
|------|-------------|
| 1391 | 33 cm |
| | 40 in a box |

Paint Tray

| | |
|------|-------------------|
| 1181 | 32 x 40 x 10,5 cm |
| | 10 in a box |

Paint tray with grid surface is one of the assistance of painters.



Paint Tray Liner

| | |
|------|-------------------|
| 1183 | 32 x 40 x 10,5 cm |
| | 50 in a box |

| Code | Dimensions | Box |
|------|----------------------|-----|
| 1180 | 35 x 50 x 21 cm | 4 |
| 1182 | 13,5 x 23,5 x 4,5 cm | 12 |
| 1190 | 32 x 40 x 10,5 cm | 2 |
| 1392 | 10,2 x 21 x 11,8 cm | 6 |
| 1181 | 32 x 40 x 10,5 cm | 10 |
| 1183 | 32 x 40 x 10,5 cm | 50 |
| 1185 | 26 x 34 x 4 cm | 24 |
| 1188 | 18 cm | 12 |
| 1390 | 33 cm | 40 |
| 1391 | 33 cm | 40 |

PAINT APPLICATION PRODUCTS

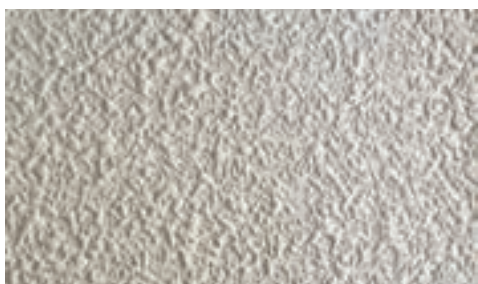


Whitewash Tank

| | |
|------|------------------------|
| 1300 | 1305 + 1310 + 6 m hose |
| | 1 Box |

Used in limewash applications. Tank with a storage of 5 tins of limewash operates with 4 bar pressures. It requires air-compressor connection.

| Code | Product | Box |
|------|----------------|-----|
| 1300 | Machine Set | 1 |
| 1305 | Whitewash Tank | 1 |
| 1310 | Whitewash Head | 1 |



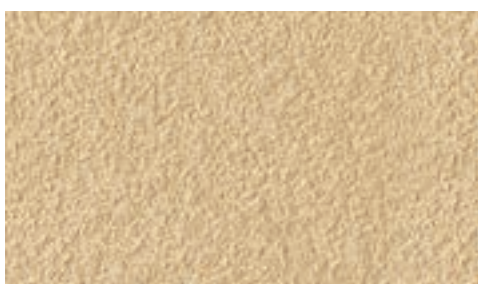
| | | |
|------|------------------------------------|---|
| 1302 | Machine Set | 1 |
| 1303 | Tank 40 Lt | 1 |
| 1304 | Spraying Gun | 1 |
| 1311 | Spray Nozzle of Gun | 1 |
| 1298 | Spray Nozzle of Gun Set (3 pieces) | 1 |



Interior Decorate Spraying Machine

| | |
|------|------------------------|
| 1302 | 1303 + 1304 + 6 m hose |
| | 1 Box |

Used for internal facade coating or applying the face rite paint on plaster, concrete, gauging plaster, wooden Natural boards and prefabricated surfaces in interior decorations. Creates large and small grains on walls. Requires a set with a 6m hose and a 40 Lt storage tank, and 5 bar compressor connection. Size of the grains can be adjusted using the pressure and paint adjustment valves on the gun.



| | | |
|------|--------------|---|
| 1306 | Complete Set | 1 |
| 1307 | Spraying Gun | 1 |
| 1308 | Tank 2 lt | 1 |



Exterior Surface Acrylic Spraying Gun

| | |
|------|-------------|
| 1306 | 1307 + 1308 |
| | 1 Box |

Used in external decoration applications with paint gun with acrylic external mineral-sanded coating paints. The gun operating with 5-7 bar pressure requires a compressor connection. The gun creates large and small grains on walls. Grain size is adjusted using pressure adjustment screw at the backside of the gun.

EXTENSION POLES

It's length can be adjusted.
Wooden tip provides multi purpose usage.

| Code | Max (m) | Min (cm) | Stage | Box |
|------|---------|----------|-------|-----|
|------|---------|----------|-------|-----|



Light Aluminium Pole (Stable)

| | | | | |
|------|------|---|---|----|
| 1276 | 1,2 | - | - | 25 |
| 1277 | 1,5 | - | - | 25 |
| 1278 | 1,75 | - | - | 25 |
| 1279 | 2 | - | - | 25 |

| Code | Max (m) | Min (cm) | Stage | Box |
|------|---------|----------|-------|-----|
|------|---------|----------|-------|-----|



2 Stage Light Aluminium Slender Extension Pole

| | | | | |
|------|-----|-----|---|----|
| 1280 | 1,5 | 90 | 2 | 12 |
| 1281 | 2 | 115 | 2 | 12 |
| 1282 | 2,5 | 136 | 2 | 12 |
| 1283 | 3 | 163 | 2 | 12 |

| Code | Max (m) | Min (cm) | Stage | Box |
|------|---------|----------|-------|-----|
|------|---------|----------|-------|-----|



2 Stage Economic Extension Pole

| | | | | |
|------|-----|-----|---|----|
| 1260 | 1 | 65 | 2 | 12 |
| 1261 | 1,5 | 90 | 2 | 12 |
| 1262 | 2 | 115 | 2 | 12 |
| 1263 | 2,5 | 140 | 2 | 12 |



2 Stage Light Aluminium Extension Pole

| | | | | |
|------|-----|-----|---|----|
| 1291 | 1,5 | 88 | 2 | 12 |
| 1292 | 2 | 115 | 2 | 12 |
| 1293 | 2,5 | 132 | 2 | 12 |
| 1294 | 3 | 162 | 2 | 12 |



3 Stage Aluminium Thick Extension Pole

| | | | | |
|------|-----|-----|---|---|
| 1270 | 2 | 89 | 3 | 8 |
| 1271 | 2,5 | 103 | 3 | 8 |
| 1272 | 3 | 120 | 3 | 8 |
| 1273 | 4 | 154 | 3 | 8 |
| 1274 | 5 | 186 | 3 | 6 |
| 1275 | 6 | 220 | 3 | 6 |



Economic Pole (Stable)

| | | | | |
|------|------|---|---|----|
| 1265 | 1,2 | - | - | 25 |
| 1266 | 1,5 | - | - | 25 |
| 1267 | 1,75 | - | - | 25 |
| 1268 | 2 | - | - | 25 |



3 Stage Light Aluminium Extension Pole

| | | | | |
|------|---|-----|---|---|
| 1295 | 2 | 86 | 3 | 8 |
| 1296 | 4 | 151 | 3 | 8 |
| 1297 | 6 | 216 | 3 | 6 |
| 1299 | 8 | 425 | 3 | 4 |



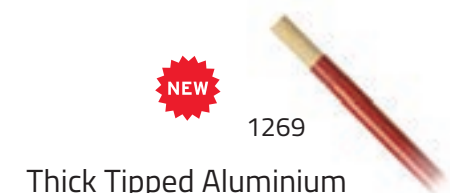
2 Stage Aluminium Thick Extension Pole

| | | | | |
|------|-----|-----|---|---|
| 1170 | 1,5 | 88 | 2 | 8 |
| 1171 | 2 | 114 | 2 | 8 |
| 1172 | 2,5 | 135 | 2 | 8 |
| 1173 | 3 | 165 | 2 | 8 |
| 1174 | 4 | 216 | 2 | 6 |
| 1176 | 5 | 265 | 2 | 6 |
| 1175 | 6 | 316 | 2 | 6 |



Trawl Extension Pole

| | | | | |
|------|-----|----|---|---|
| 1178 | 1,4 | 60 | 3 | 8 |
|------|-----|----|---|---|



Thick Tipped Aluminium Pole (Stable)

| | | | | |
|------|-----|---|---|---|
| 1269 | 1,2 | - | - | 8 |
| 1290 | 1,5 | - | - | 8 |

* Can be used with Sweeping Brushes and 30 cm Scraper.



It has a hard fiber bristles.
 Used for sweeping hard objects.
 Long lasting wooden brush.
 Suitable for wet and dry surfaces.
 Use for household or industrial applications.

| | |
|------|------------|
| 6266 | 120 cm |
| | 47.2" |
| | 2 in a box |



| Code | Width | Box |
|------|----------------|-----|
| 6260 | 11.8" / 30 cm | 12 |
| 6261 | 15.7" / 40 cm | 12 |
| 6262 | 19.7" / 50 cm | 12 |
| 6263 | 23.6" / 60 cm | 12 |
| 6264 | 31.5" / 80 cm | 6 |
| 6265 | 39.4" / 100 cm | 2 |
| 6266 | 47.2" / 120 cm | 2 |

| | |
|------|------------|
| 6265 | 100 cm |
| | 39.4" |
| | 2 in a box |

| | |
|------|------------|
| 6264 | 80 cm |
| | 31.5" |
| | 6 in a box |



| | |
|------|-------------|
| 6263 | 60 cm |
| | 23.6" |
| | 12 in a box |

| | |
|------|-------------|
| 6261 | 40 cm |
| | 15.7" |
| | 12 in a box |

| | |
|------|-------------|
| 6260 | 30 cm |
| | 11.8" |
| | 12 in a box |

| | |
|------|-------------|
| 6262 | 50 cm |
| | 19.7" |
| | 12 in a box |



Use with
Thick Tipped
Aluminium Pole.
Page: 41

PLASTIC SWEEPING

YARD BRUSHES



It has a hard fiber bristle.
 Used for sweeping hard objects.
 Long lasting wooden brush.
 Suitable for wet and dry surfaces.
 Use for household or industrial applications.

| | |
|------|-------------|
| 6253 | 60 cm |
| | 23.6" |
| | 12 in a box |

| | |
|------|-------------|
| 6252 | 50 cm |
| | 19.7" |
| | 12 in a box |

| | |
|------|-------------|
| 6251 | 40 cm |
| | 15.7" |
| | 12 in a box |



| | |
|------|-------------|
| 6250 | 30 cm |
| | 11.8" |
| | 12 in a box |

| Code | Width | Box |
|------|---------------|-----|
| 6250 | 11.8" / 30 cm | 12 |
| 6251 | 15.7" / 40 cm | 12 |
| 6252 | 19.7" / 50 cm | 12 |
| 6253 | 23.6" / 60 cm | 12 |

Use with Light Aluminium Pole (Stable).
 Page: 41





PLASTIC SWEEPING BRUSHES

It has a soft fiber bristle.
 Used for indoor and outdoor sweeping brush.
 Long lasting plastic brush.
 Suitable for wet and dry surfaces.
 Use for household or industrial applications.

| | |
|------|-------------|
| 6293 | 60 cm |
| | 23.6" |
| | 12 in a box |

| | |
|------|-------------|
| 6292 | 50 cm |
| | 19.7" |
| | 12 in a box |

| | |
|------|-------------|
| 6291 | 40 cm |
| | 15.7" |
| | 12 in a box |



| | |
|------|-------------|
| 6290 | 30 cm |
| | 11.8" |
| | 12 in a box |

| Code | Width | Box |
|------|---------------|-----|
| 6290 | 11.8" / 30 cm | 12 |
| 6291 | 15.7" / 40 cm | 12 |
| 6292 | 19.7" / 50 cm | 12 |
| 6293 | 23.6" / 60 cm | 12 |

Use with Light Aluminium Pole (Stable).
 Page: 41



AUTO AND MARINE BRUSHES



Double Flow-Thru auto and marine wash brush. Long lasting plastic brush, not affected from hot water. Soft bristles make it safe for clear coat paint. Use for household or industrial applications with standard hose.

Double water flow-thru.



Auto Washing Brush

| | |
|------|-------------|
| 6220 | 25 cm |
| | 9.8" |
| | 12 in a box |

Double water flow-thru.



Extra Auto Washing Brush

| | |
|------|-------------|
| 6221 | 25 cm |
| | 9.8" |
| | 12 in a box |

Marine Washing Brush

| | |
|------|------------|
| 6231 | 33 cm |
| | 13" |
| | 4 in a box |

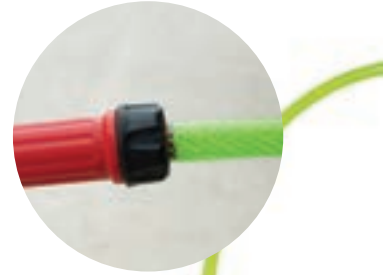
Extra Marine Washing Brush

| | |
|------|------------|
| 6230 | 33 cm |
| | 13" |
| | 4 in a box |

Water flow-thru.



Water flow-thru.



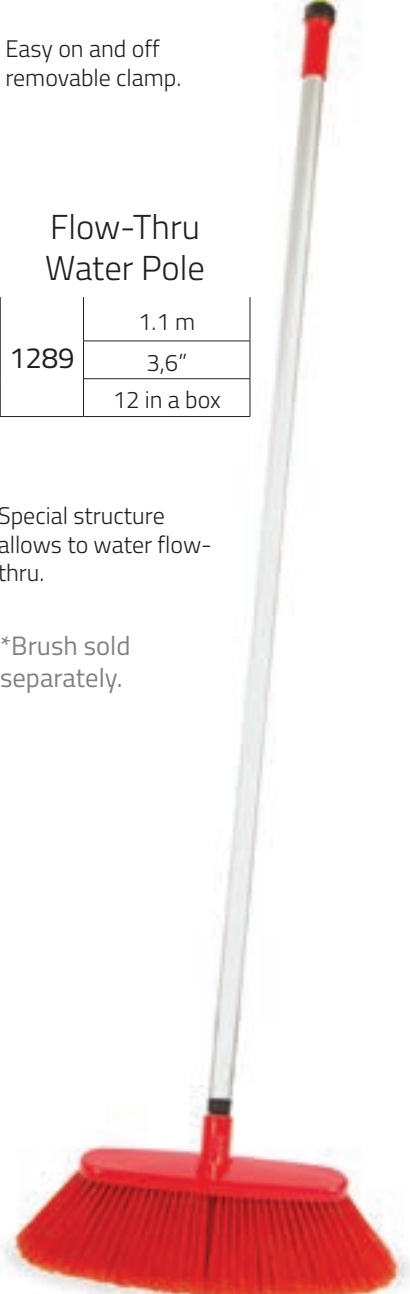
Easy on and off removable clamp.

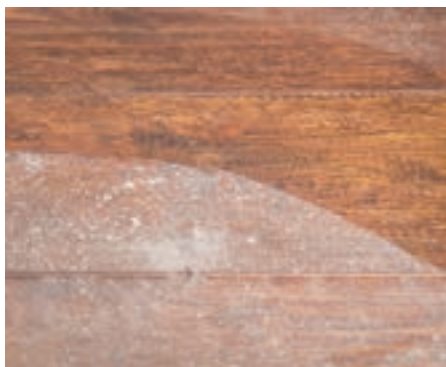
Flow-Thru Water Pole

| | |
|------|-------------|
| 1289 | 1.1 m |
| | 3,6" |
| | 12 in a box |

Special structure allows to water flow-thru.

*Brush sold separately.





For dust or for general cleaning.



Hand Brush

| | |
|------|-------------|
| 6280 | 13 cm |
| | 5,1" |
| | 12 in a box |



For brushing the rusty and hard surfaces.



Hard Wire Brush

| | |
|------|-------------|
| 6201 | 13 cm |
| | 5,1" |
| | 12 in a box |



For removing dirt from oily surfaces.



Soft Wire Brush

| | |
|------|-------------|
| 6200 | 13 cm |
| | 5,1" |
| | 12 in a box |



For removing stains on carpets.



Double water flow-thru.

Carpet Cleaning Brush

| | |
|------|-------------|
| 6240 | 24 cm |
| | 9,4" |
| | 12 in a box |



For brushing the grounds.



Scrub Brush

| | |
|------|------------|
| 6271 | 29 cm |
| | 11,4" |
| | 6 in a box |



For brushing the corners that are difficult to wipe.



Water flow-thru.

Corner Scrub Brush

| | |
|------|------------|
| 6270 | 24 cm |
| | 9,4" |
| | 2 in a box |

DECORATIVE PAINTING ROLLERS



Used with acrylic paints on exterior for decorative purposes.



Foam Coral Roller

| | |
|------|-------------|
| 1116 | 20 cm |
| | 12 in a box |



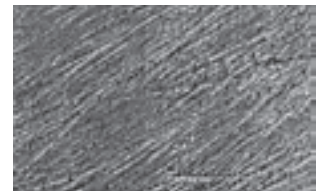
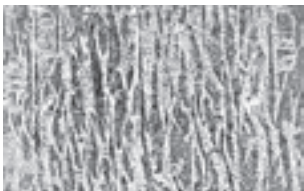
Foam Roller With Cavities

| | |
|------|-------------|
| 1117 | 20 cm |
| | 12 in a box |



Foam Roller with Naps

| | |
|------|-------------|
| 1118 | 20 cm |
| | 12 in a box |



Leather Effect Roller

| | |
|------|------------|
| 1320 | 20 cm |
| | 2 in a box |



Leather Rose Effect Roller

| | |
|------|------------|
| 1321 | 20 cm |
| | 2 in a box |



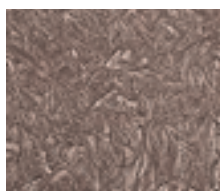
Grayhound Ear Effect Roller

| | |
|------|------------|
| 1322 | 20 cm |
| | 2 in a box |



Nylon Effect Roller

| | |
|------|------------|
| 1323 | 20 cm |
| | 2 in a box |



1551

Small Grass Effect Roller

Large Grass Effect Roller

Thin Effect Roller

Ringed Roller

Brick Effect Roller

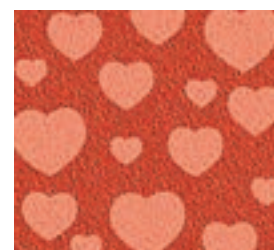
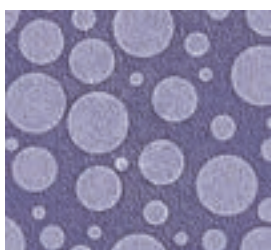
| | |
|------|------------|
| 1339 | 20 cm |
| | 2 in a box |

| | |
|------|------------|
| 1340 | 20 cm |
| | 2 in a box |

| | |
|------|------------|
| 1346 | 20 cm |
| | 2 in a box |

| | |
|------|------------|
| 1550 | 11 cm |
| | 2 in a box |

| | |
|------|------------|
| 1551 | 20 cm |
| | 2 in a box |



Balloon Effect Roller

Checker Effect Roller

Rush Mate Effect Roller

Heart Effect Roller

| | |
|------|------------|
| 1552 | 20 cm |
| | 2 in a box |

| | |
|------|------------|
| 1553 | 20 cm |
| | 2 in a box |

| | |
|------|------------|
| 1554 | 20 cm |
| | 2 in a box |

| | |
|------|------------|
| 1556 | 20 cm |
| | 2 in a box |

| Code | Height (cm) | Box |
|--|-------------|-----|
| Foam Coral Roller | | |
| 1116 | 20 | 12 |
| Foam Coral Roller Sleeve | | |
| 1136 | 20 | 25 |
| Foam Roller With Cavities | | |
| 1117 | 20 | 12 |
| 1129 | 25 | 12 |
| Foam Roller with Cavities Sleeves | | |
| 1135 | 25 | 25 |

| Code | Height (cm) | Box |
|---|-------------|-----|
| Foam Roller with Naps | | |
| 1118 | 20 | 12 |
| 1122 | 25 | 12 |
| Foam Roller with Naps Sleeves | | |
| 1124 | 20 | 25 |
| 1125 | 25 | 25 |
| Foam Radiator Roller with Naps | | |
| 1123 | 10 | 25 |
| Foam Radiator Roller with Naps Sleeves | | |
| 1128 | 10 | 50 |

| Code | Height (cm) | Box |
|------|-------------|-----|
| 1339 | 20 | 2 |
| 1340 | 20 | 2 |
| 1346 | 20 | 2 |
| 1550 | 11 | 2 |
| 1551 | 20 | 2 |
| 1552 | 20 | 2 |
| 1553 | 20 | 2 |
| 1554 | 20 | 2 |
| 1556 | 20 | 2 |

DECORATIVE PAINTING TOOLS

For use in decorative paint applications to create figures and patterns on wall and ceiling. Must be applied with special effect roller.

Sycamore Leaf Stamp

1526 / 15 x 20 cm / 4 in a box



Ivy Stamp

1527 / 15 x 20 cm / 4 in a box



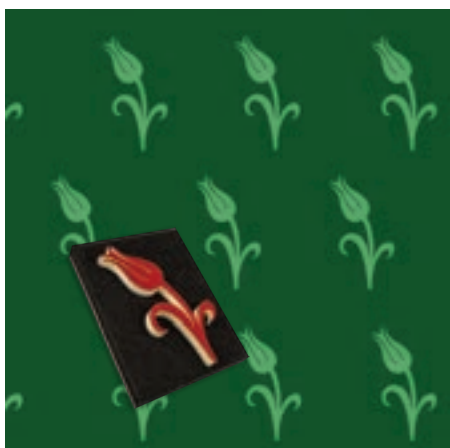
Linden Leaf Stamp

1528 / 15x 20 cm / 4 in a box



Large Tulip Stamp

1536 / 15 x 20 cm / 4 in a box



Large Double Tulip Stamp

1537 / 15 x 20 cm / 4 in a box



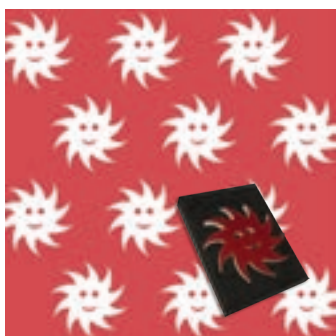
Large Rose Stamp

1538 / 15 x 20 cm / 4 in a box



Large Sun Stamp

1535 / 15 x 20 cm / 4 in a box



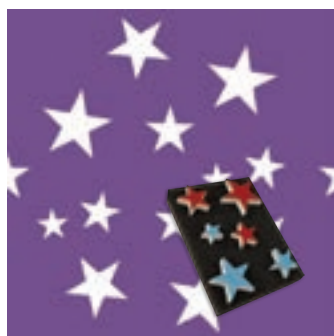
Large Moon Stamp

1534 / 15 x 20 cm / 4 in a box



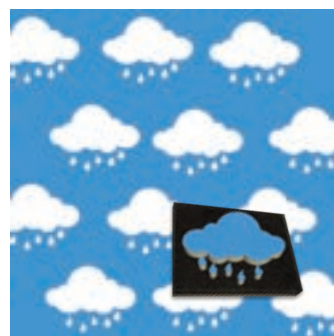
Star Decorative Stamp

1533 / 15 x 20 cm / 4 in a box

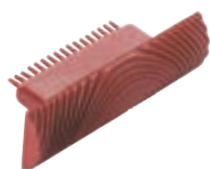


Cloud Stamp

1539 / 15 x 20 cm / 4 in a box



Wood Surface Effect Tool



1345 / 10 cm / 6 in a box



1347 / 15 cm / 6 in a box



1344 / 20 cm / 2 in a box



Leather Rose Effect Tool

1326 / 15 x 6 cm / 3 in a box



Crystal Effect Sponge

1328 / 15 cm / 4 in a box



Scratch Design Effect Tool

1329 / 15 cm / 4 in a box



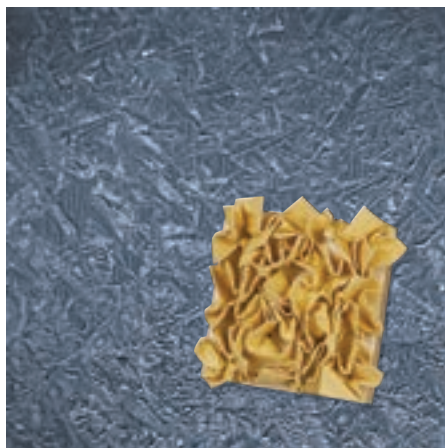
Deep Relief Sponge

1327 / 15 cm / 4 in a box



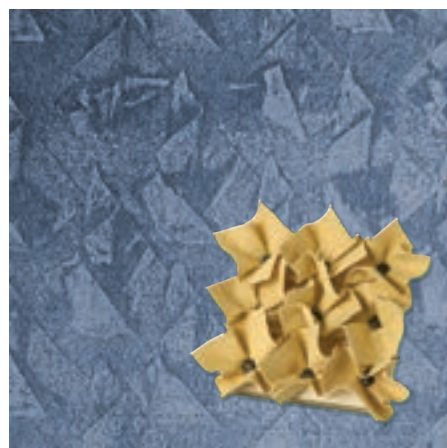
Stamp Effect Tool

1325 / 14 x 14 cm / 2 in a box



Stamp Effect Tool

1425 / 14 x 14 cm / 2 in a box



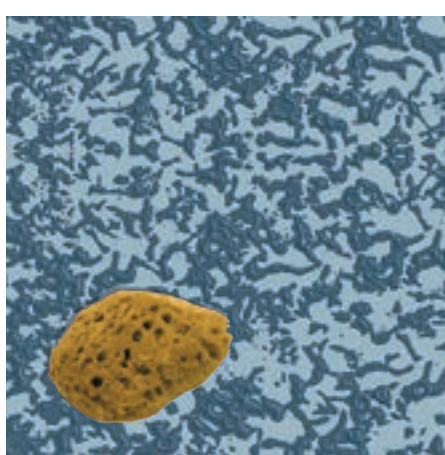
Effect Spatula

1555 / 10,5 x 16 cm / 6 in a box



Natural Coral Effect Sponge (Medium)

1474 / 17 cm / 6 in a box



**Effect Tool
1348**

5,8 x 6,1 x 0,7 cm
6 in a box

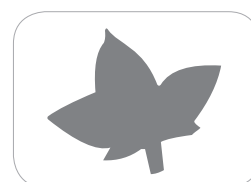
| Code | Type | Height (cm) | Box |
|------|--------|-------------|-----|
| 1473 | Small | 13 | 6 |
| 1474 | Medium | 17 | 6 |
| 1475 | Large | 21 | 6 |



DECORATIVE PAINTING STAMPS

For use in decorative paint applications to creative figures and patterns on wall and ceiling. Must be applied with special effect paints.

9 x 7 cm / 3 in a box



1330
Oak leaf Stamp



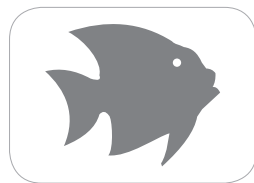
1331
Star Stamp



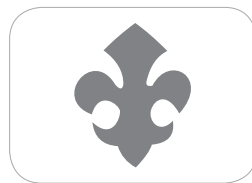
1332
Sea Horse Stamp



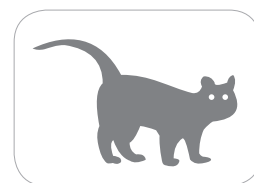
1333
Small Moon Stamp



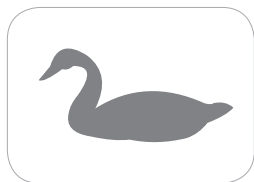
1334
Cute Fish Stamp



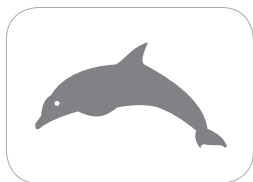
1335
Sympathy Stamp



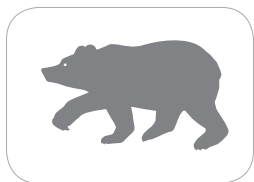
1336
Cat Stamp



1337
Swan Stamp



1338
Dolphin Stamp



1439
Bear Stamp



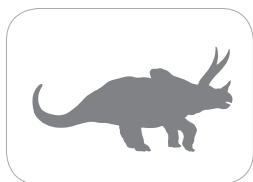
1440
Owl Stamp



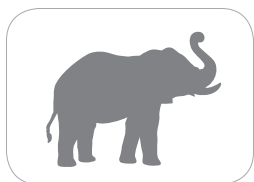
1441
Large Dinosaur Stamp



1442
Small Dinosaur Stamp



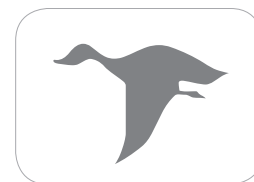
1443
Dinosaur Stamp



1444
Elephant Stamp



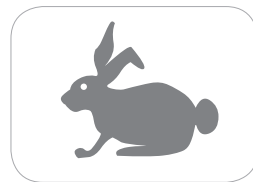
1445
Pigeon Stamp



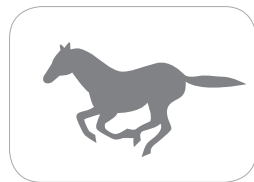
1446
Goose Stamp



1447
Dog Stamp



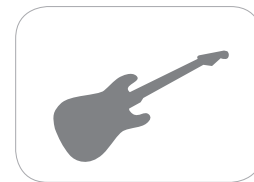
1448
Rabbit Stamp



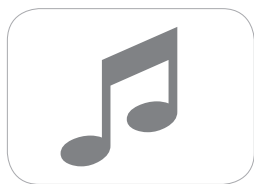
1449
Horse Stamp



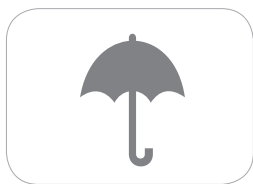
1450
Pine Tree Stamp



1452
Guitar Stamp



1453
Note Stamp



1454
Umbrella Stamp



1455
Balerina Stamp



1456
Soccer Stamp



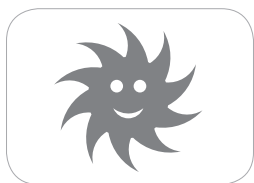
1457
Sail Stamp



1458
Airplain Stamp



1459
Car Stamp



1470
Small Sun Stamp



1471
House Stamp



1472
Tulip Stamp

WALL STAMP

SETS

16 cm / 4 in a box



Jasmine
1560



Tulip Pattern
1561



Violet
1562



Time Warp
1563



Palm Leaf
1564



Lily
1565



Clover
1566



Roseflower
1567



Sunrise
1568



Rosebud
1569



Seahorse
1570



Hyacinth
1571



Cat
1594



Rabbit
1595



Butterfly
1596



Bremen Town
Musician
1597



Oak Leaf
1598



Daphne Leaf
1599



Rose
1600

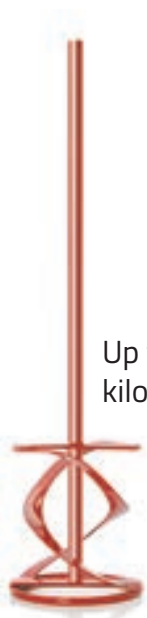


Rooster
1601

MIXER HEADS



For use in application of materials like paints, plaster, mortar, filler, lacquers, etc. with drills or mixing machines.



Up to **30** kilos.

✓ Mortar ✓ Plaster

Mortar Mixer Head

| | |
|------|---------------|
| 1208 | Height: 59 cm |
| | 6 in a box |

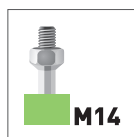


Up to **30** kilos.

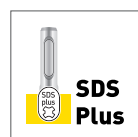
✓ Mortar ✓ Plaster

Mortar Mixer Head - M14

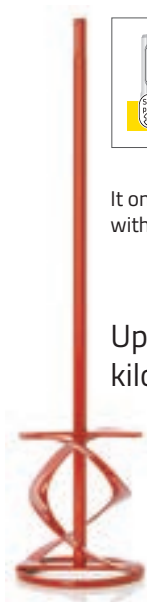
| | |
|------|---------------|
| 1517 | Height: 59 cm |
| | 6 in a box |



It only fits to drills with M14 bits.



It only fits to drills with SDS Plus bits.



Up to **30** kilos.

✓ Mortar ✓ Plaster

Mortar Mixer Head - SDS Plus

| | |
|------|---------------|
| 1518 | Height: 59 cm |
| | 6 in a box |



Up to 25 kilos.

✓ Mortar ✓ Paint ✓ Plaster

Mixer Head

| | |
|------|---------------|
| 1514 | Height: 59 cm |
| | 12 in a box |

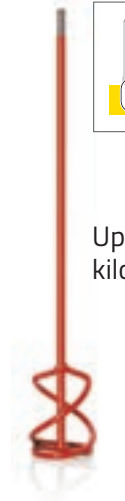


Up to 25 kilos.

✓ Mortar ✓ Paint ✓ Plaster

Mixer Head -SDS PLus

| | |
|------|---------------|
| 1714 | Height: 59 cm |
| | 12 in a box |

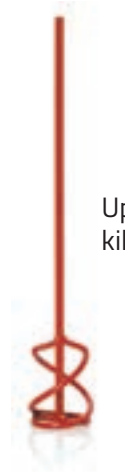
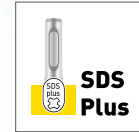


Up to 25 kilos.

✓ Mortar ✓ Paint ✓ Plaster

Mixer Head -SDS PLus

| | |
|------|---------------|
| 1715 | Height: 45 cm |
| | 12 in a box |



Up to 10 kilos.

✓ Mortar ✓ Paint ✓ Plaster

Mixer Head

| | |
|------|---------------|
| 1515 | Height: 41 cm |
| | 12 in a box |

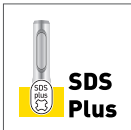


Up to 25 kilos.

✓ Mortar ✓ Paint ✓ Plaster

Mixer Head -SDS PLus

| | |
|------|---------------|
| 1519 | Height: 45 cm |
| | 12 in a box |

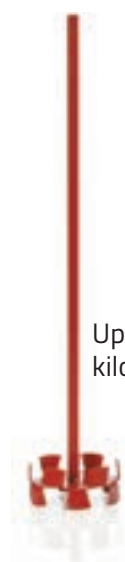


Up to 25 kilos.

✓ Mortar ✓ Paint ✓ Plaster

Mixer Head

| | |
|------|---------------|
| 1209 | Height: 45 cm |
| | 12 in a box |



Up to 25 kilos.

✓ Mortar ✓ Paint ✓ Plaster

Butterfly Mixer Head

| | |
|------|---------------|
| 1513 | Height: 47 cm |
| | 12 in a box |



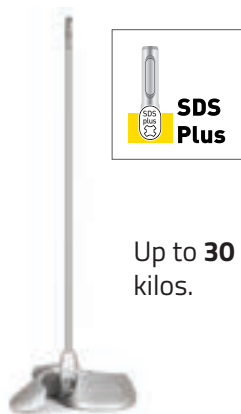
Up to 25 kilos.

✓ Mortar ✓ Paint ✓ Plaster

Butterfly Mixer Head-SDS PLus

| | |
|------|---------------|
| 1713 | Height: 47 cm |
| | 12 in a box |





Up to **30** kilos.

✓ Mortar ✓ Plaster

Jumbo Nano Mixer Head

| | |
|------|---------------|
| 1521 | Height: 60 cm |
| | 2 in a box |



Up to **10** kilos.

✓ Paint ✓ Plaster

Mixer Head

| | |
|------|---------------|
| 1512 | Height: 44 cm |
| | 12 in a box |



Up to **15** kilos.

✓ Paint ✓ Plaster

Mixer Head

| | |
|------|---------------|
| 1510 | Height: 43 cm |
| | 12 in a box |



Up to **5** kilos.

✓ Mortar ✓ Paint ✓ Plaster

Mixer Head

| | |
|------|---------------|
| 1516 | Height: 25 cm |
| | 12 in a box |



Up to **15** kilos.

✓ Paint ✓ Plaster

Auger Mixer Head

| | |
|------|---------------|
| 1511 | Height: 38 cm |
| | 12 in a box |



Up to **25** kilos.

✓ Paint ✓ Plaster

Mixer Head

| | |
|------|---------------|
| 1520 | Height: 25 cm |
| | 12 in a box |

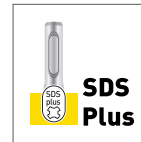
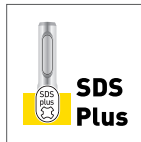
| Code | Product | Head | Height (cm) | Diameter (cm) | Side (mm) | Mix (kg) | Power (w) | Box |
|------|-----------------------|----------|-------------|---------------|-----------|----------|-----------|-----|
| 1208 | Mixer Head | Hexagon | 59 | 14 | 12 | 15 - 30 | 1000 | 6 |
| 1209 | Mixer Head | Hexagon | 45 | 8,5 | 10 | 10 - 25 | 600 | 12 |
| 1510 | Mixer Head | Hexagon | 43 | 6,5 | 8 | 5 - 15 | 500 | 12 |
| 1511 | Auger Mixer Head | Hexagon | 38 | 4 | 10 | 0-15 | 1000 | 12 |
| 1512 | Mixer Head | Hexagon | 44 | 8 | 8 | 10 | 500 | 12 |
| 1513 | Butterfly Mixer Head | Hexagon | 47 | 9 | 10 | 25 | 600 | 12 |
| 1514 | Mixer Head | Hexagon | 59 | 9 | 10 | 10 - 25 | 700 | 12 |
| 1515 | Mixer Head | Hexagon | 41 | 6 | 8 | 5 - 10 | 500 | 12 |
| 1516 | Mixer Head | Circle | 25 | 4 | 6 | 0 - 5 | 500 | 12 |
| 1517 | Mixer Head | M14 | 59 | 14 | 14 | 15 - 30 | 1000 | 6 |
| 1518 | Mixer Head | SDS Plus | 59 | 14 | 12 | 15 - 30 | 1000 | 6 |
| 1519 | Mixer Head | SDS Plus | 45 | 8,5 | 10 | 10 - 25 | 600 | 12 |
| 1520 | Mixer Head | Circle | 25 | 6 | 6 | 25 | 600 | 12 |
| 1521 | Jumbo Nano Mixer Head | SDS Plus | 60 | 22 | 12 | 15 - 30 | 1000 | 2 |
| 1713 | Butterfly Mixer Head | SDS Plus | 47 | 9 | 10 | 25 | 600 | 12 |
| 1714 | Mixer Head | SDS Plus | 59 | 9 | 12 | 10 - 25 | 700 | 12 |
| 1715 | Mixer Head | SDS Plus | 45 | 6 | 10 | 5 - 10 | 500 | 12 |

STYROFOAM PUNCH

! Used for creating holes on the styrofoam material in jacketing applications to prevent the pin head run over the styrofoam surface.



Breaker, driller.
With drill bits.



Styrofoam Punch

| | |
|------|------------|
| 1547 | Ø: 8 mm |
| | 6 in a box |

Styrofoam Punch

| | |
|------|------------|
| 1543 | Ø: 10 mm |
| | 6 in a box |

Styrofoam Punch

| | |
|------|------------|
| 1545 | Ø: 12 mm |
| | 6 in a box |



Styrofoam Punch

| | |
|------|------------|
| 1541 | Ø: 8 mm |
| | 6 in a box |



Styrofoam Punch

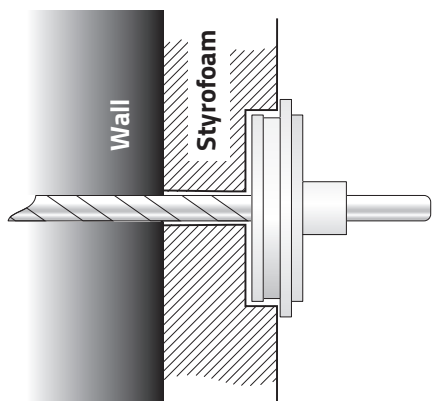
| | |
|------|------------|
| 1542 | Ø: 10 mm |
| | 6 in a box |



Styrofoam Punch

| | |
|------|------------|
| 1544 | Ø: 12 mm |
| | 6 in a box |

Styrofoam Punch (with drill bit)



Styrofoam Punch

| | |
|------|------------|
| 1540 | Ø: 8 mm |
| | 6 in a box |



Styrofoam Punch Spare

| | |
|------|-------------|
| 1546 | Ø: 8 mm |
| | 12 in a box |

| Code | Head | Diameter (mm) | Punch Diameter (mm) | Box |
|------|----------|---------------|---------------------|-----|
| 1541 | - | 8 | 65 | 6 |
| 1547 | SDS PLUS | 8 | 65 | 6 |
| 1542 | - | 10 | 65 | 6 |
| 1543 | SDS PLUS | 10 | 65 | 6 |
| 1544 | - | 12 | 65 | 6 |
| 1545 | SDS PLUS | 12 | 65 | 6 |

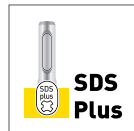
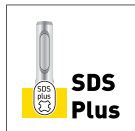
Styrofoam Punch

| | | | | |
|------|---|---|----|---|
| 1540 | - | 8 | 65 | 6 |
|------|---|---|----|---|

Styrofoam Punch Spare

| | | | | |
|------|---|---|----|----|
| 1546 | - | 8 | 65 | 12 |
|------|---|---|----|----|

AERATED CONCRETE PRODUCTS



Punches

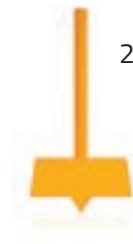
Punches are used by using low speed drills without giving harm to the electrical installation.



2541



2542



2540



Aerated Concrete Mixer Head

1522

H: 55 cm D: 10,7
6 in a box



Aerated Concrete Shovel

2544

8,5 cm
2 in a box

Aerated Concrete Aspirator Chimney Punch

2541

37 cm
6 in a box

Aerated Concrete Boiler Chimney Punch

2542

36 cm
6 in a box

Aerated Concrete Electric Box Opener

2540

12,5 cm
12 in a box



! All size included

Aerated Concrete Trencher

2550

45 cm
4 in a box



Aerated Miter

2543

26 cm
6 in a box

| Code | Lenght (cm) | Box |
|------|-------------|-----|
| 1522 | 55 | 6 |
| 2540 | 12,5 | 12 |
| 2541 | 37 | 6 |
| 2542 | 36 | 6 |
| 2543 | 26 | 6 |
| 2550 | 45 | 4 |

Aerated Concrete Shovel

| | | |
|------|------|---|
| 2544 | 8,5 | 2 |
| 2545 | 10,5 | 2 |
| 2546 | 13,5 | 2 |
| 2547 | 15,5 | 2 |
| 2548 | 20,5 | 2 |
| 2549 | 25,5 | 2 |

SANDERS



Used in wall ceiling sanding applications. Sand paper is stretched and clamped on the spud by loosening the screws. Sander spud with movable head can reach to difficult surfaces by inserting on the rod end.



| | |
|------------------|-------------|
| Pole Hand Sander | |
| 1507 | 11x23 cm |
| | 12 in a box |



| | |
|------------------|-------------|
| Pole Hand Sander | |
| 1207 | 9x22,5 cm |
| | 12 in a box |



| | |
|-------------|-------------|
| Hand Sander | |
| 1206 | 9x22,5 cm |
| | 12 in a box |

Rubber Hand Sander

| | |
|------|-------------|
| 1234 | 7x21 cm |
| | 12 in a box |

Used in surface sanding applications.



Ergonomic Hand Sander

| | |
|------|-------------|
| 1235 | 15 cm |
| | 12 in a box |

Used in surface sanding applications. Easy use due to the ergonomic structure facilitating gripping and applying power. Can be used with both the right and left hand.



Strip Disc Foam

| | |
|------|-------------|
| 1382 | 4,5 cm |
| | 25 in a box |

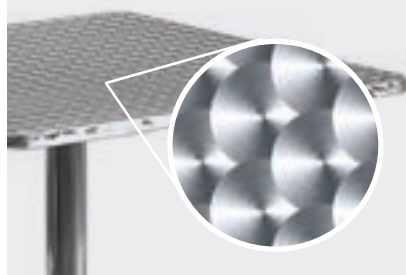


Strip Disc Tool

| | |
|------|-------------|
| 1380 | 4,5 cm |
| | 12 in a box |



Used for polishing chrome surfaces.



| Code | Height (cm) | Box |
|------|-------------|-----|
| 1206 | 9 x 22,5 | 12 |
| 1207 | 9 x 22,5 | 12 |
| 1507 | 11 x 23 | 12 |
| 1234 | 7 x 21 | 12 |
| 1235 | 15 | 12 |

Strip Disc Tool

| | | |
|------|-----|----|
| 1380 | 4,5 | 12 |
| 1381 | 5 | 12 |

Strip Disc Foam

| | | |
|------|-----|----|
| 1382 | 4,5 | 25 |
| 1383 | 5 | 25 |

EPOXY PRODUCTS

It is used for extracting air bubbles in epoxy chemicals.



Epoxy Spiked Roller (Large)

| | |
|------|------------|
| 1223 | 20 cm |
| | 2 in a box |

Epoxy Spiked Roller (Large)

| | |
|------|------------|
| 1224 | 25 cm |
| | 2 in a box |



Epoxy Spiked Roller (Small)

| | |
|------|------------|
| 1222 | 30 cm |
| | 2 in a box |

Epoxy Spiked Roller (Small)

| | |
|------|------------|
| 1221 | 25 cm |
| | 2 in a box |

| Code | Height (cm) | Diameter (cm) | Box |
|------|-------------|---------------|-----|
| 1226 | 10 | 7 | 2 |
| 1220 | 20 | 7 | 2 |
| 1221 | 25 | 7 | 2 |
| 1222 | 30 | 7 | 2 |
| 1223 | 20 | 11 | 2 |
| 1224 | 25 | 11 | 2 |
| 1225 | 30 | 11 | 2 |

Used for facilitating walking by wearing under the shoes on grounds where epoxy mortars and chemical resins are applied.



Epoxy Nailed Shoes

| | |
|------|--------|
| 1126 | 31 cm |
| | 1 pair |

Adjustable Epoxy Stage Trowel

| | |
|------|------------|
| 1140 | 70 cm |
| | 6 in a box |



Epoxy Stage

Trowel

1127
1'l'i Box
50 cm

Used in spreading epoxy and checimal resins. Level height can be adjusted by means of screws on the top.



Hot Isolation Roller



| | |
|------|-------------|
| 1034 | 20 cm |
| | 12 in a box |

Wallpaper Seam Roller



NEW

| | |
|------|--------------|
| 1167 | 4,5 x 4,5 cm |
| | 6 in a box |



NEW

| | |
|------|------------|
| 1168 | 9 x 4,5 cm |
| | 6 in a box |



NEW

| | |
|------|-------------|
| 1169 | 18 x 4,5 cm |
| | 6 in a box |

Aluminium Crushing Roller



1161



1160

The roller is used for crushing and extracting the air from polyester.

| Code | Lenght cm | Ø (cm) | Box |
|------|-----------|--------|-----|
| 1160 | 8 | 2 | 25 |
| 1161 | 13 | 2 | 25 |

Spares

| | | | |
|------|----|---|----|
| 1162 | 8 | 2 | 25 |
| 1163 | 13 | 2 | 25 |

Rubber Wiper

1210

Metal Wiper

1249

| Code | Height (cm) | Box |
|---------------------|-------------|-----|
| Rubber Wiper | | |
| 1210 | 42,5 | 12 |
| 1410 | 52,5 | 12 |
| Metal Wiper | | |
| 1249 | 40 | 12 |
| 1250 | 60 | 12 |

BOAT HOOK

It is used for helping boats and rowboats to come abroad and it is also used for them to pull rope.

1284

| Code | Height Max (m) - Min (cm) | Box |
|-----------------------------|---------------------------|-----|
| Boat Hook (Stabile) | | |
| 1284 | 1,5 | 6 |
| Adjustable Boat Hook | | |
| 1285 | 1,5 / 95 | 6 |
| 1286 | 2 / 120 | 6 |
| 1287 | 2,5 / 144 | 6 |
| 1288 | 3 / 171 | 6 |



SCRAPERS



Aluminium Grip Scraper

| | |
|------|-------------|
| 1532 | 7 x 29 cm |
| | 12 in a box |



Aluminium Scraper

| | |
|------|-------------|
| 1529 | 4,5 x 27 cm |
| | 12 in a box |



Aluminium Scraper

| | |
|------|--------------|
| 1531 | 4,5 x 110 cm |
| | 6 in a box |



Aluminium Scraper Spare

| | |
|------|-------------|
| 5102 | 2,2 x 7 cm |
| | 25 in a box |



Aluminium Scraper Spare

| | |
|------|--------------|
| 5103 | 2,2 x 4,5 cm |
| | 25 in a box |

For use in various scraping works. Adjustable handle eases usage in wide area applications.



Aluminium Scraper Spare

| | |
|------|--------------|
| 5103 | 2,2 x 4,5 cm |
| | 25 in a box |

Used for scraping boats, yachts parquets.



Triangular Scraper

| | |
|------|-------------|
| 1211 | 6 x 30 cm |
| | 12 in a box |

Used in various scraping works. Tip can be changed or reversed.



Wood Handle Scraper

| | |
|------|-------------|
| 1204 | 6 x 27 cm |
| | 12 in a box |
| | € 15,00 |



Spare Knife for Triangular Scraper

| | |
|------|--------------|
| 5101 | 6,6 x 5,6 cm |
| | 12 in a box |



Spare Knife for Wood Handle Scraper

| | |
|------|-------------|
| 5100 | 5 x 6 cm |
| | 25 in a box |

Bended Scraper

6 x 35 cm
12 in a box

1201



1216

4 x 35 cm
12 in a box

For use in various scraping works.



Scraper
Wood Handle

| | |
|------|-------------|
| 1237 | 30 x 135 cm |
| | 6 in a box |



Scraper
Wood Handle

| | |
|------|-------------|
| 1236 | 20 x 128 cm |
| | 6 in a box |



Scraper

| | |
|------|-------------|
| 1203 | 20 x 20 cm |
| | 12 in a box |



Scraper

| | |
|------|-------------|
| 1217 | 5 x 16 cm |
| | 12 in a box |



Scraper

| | |
|------|-------------|
| 1202 | 10 x 20 cm |
| | 12 in a box |



Scraper

| | |
|------|-------------|
| 1205 | 30 x 20 cm |
| | 12 in a box |

Scraper with Blast Pipe
1301

13 x 100 cm

Used for removing paints by fire with LPG tube. It is scraping with 13 cm wide scraper mouth.



Spare Scraper with Blast Pipe
5104

3,2 x 13 cm
12 in a box



| Code | Dimensions (cm) | Box |
|------|-------------------|-----|
| 1201 | 6 x 35 | 12 |
| 1202 | 10 x 20 | 12 |
| 1203 | 20 x 20 | 12 |
| 1204 | 6 x 27 | 12 |
| 1205 | 30 x 25 | 12 |
| 1211 | 6 x 30 | 12 |
| 1216 | 4 x 35 | 12 |
| 1217 | 5 x 16 | 12 |
| 1236 | 20 x 128 | 6 |
| 1237 | 30 x 135 | 6 |
| 1301 | 13 x 100 | 1 |
| 1529 | 4,5 x 27 | 12 |
| 1531 | 4,5 x 110 | 6 |
| 1532 | 7 x 29 | 12 |

Spares

| | | |
|------|-----------|----|
| 5100 | 5 x 6 | 25 |
| 5101 | 6,6 x 5,6 | 12 |
| 5102 | 2,2 x 7 | 25 |
| 5103 | 2,2 x 4,5 | 25 |
| 5104 | 3,2 x 13 | 12 |

TROWELS



Silk Plastic Trowel

| | |
|-----|-------------|
| 073 | 10 x 28 cm |
| | 12 in a box |

Used for plaster applications on interior surfaces. Produced from acrylic plate and it has plastic handle.

| Code | Height (cm) | Box |
|------|-------------|-----|
| 1186 | 12,5 x 28 | 12 |
| 1187 | 12,8 x 28 | 12 |
| 073 | 10 x 28 | 12 |
| 1189 | 26 | 12 |
| 1212 | - | 12 |
| 1213 | - | 12 |



Plastic Trowel

| | |
|------|--------------|
| 1187 | 12,8 x 28 cm |
| | 12 in a box |

For use in exterior plaster applications. It is produced from acrylic plate.



Trowel with Wood Handle

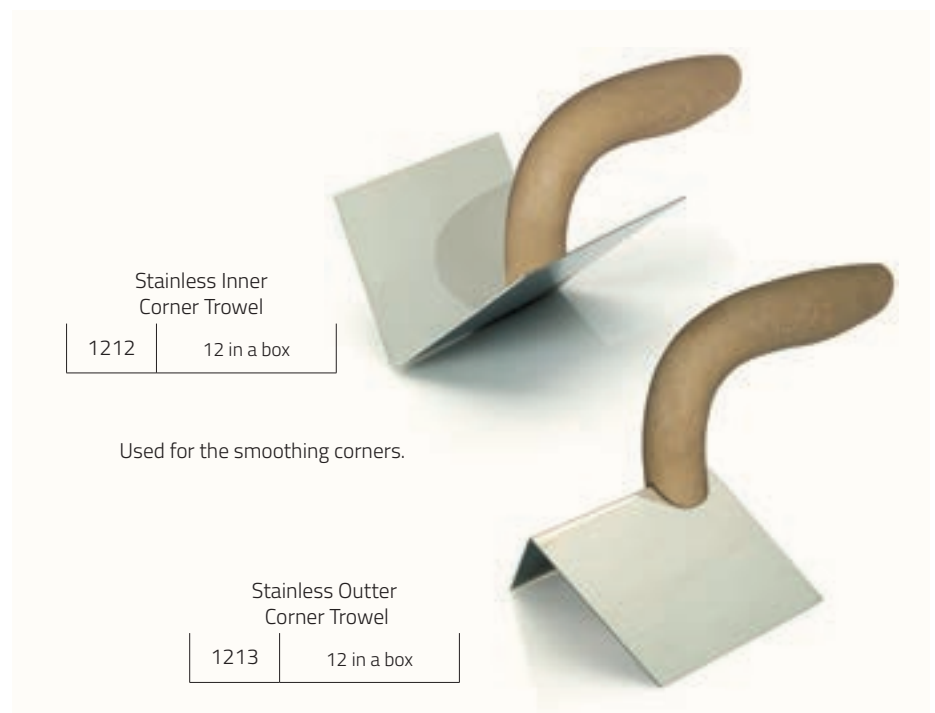
| | |
|------|--------------|
| 1186 | 12,5 x 28 cm |
| | 12 in a box |



Round Plastic Trowel

| | |
|------|-------------|
| 1189 | 26 cm |
| | 12 in a box |

It's rounded shape helps spreading the material smoothly on surfaces.



Stainless Inner Corner Trowel

| | |
|------|-------------|
| 1212 | 12 in a box |
|------|-------------|

Used for the smoothing corners.

Stainless Outer Corner Trowel

| | |
|------|-------------|
| 1213 | 12 in a box |
|------|-------------|

Plastic Rake



| | |
|------|------------|
| 1415 | 50 cm |
| | 6 in a box |



| | |
|------|------------|
| 1414 | 35 cm |
| | 6 in a box |

Used for in the barn and snow removal application.

1290

Use with Thick Tipped Aluminium Pole (Stable)



1530

1215

1214

Mortar Rake

Used for spreading and collecting mortar and similar materials.

| Code | Dimensions (cm) | Box |
|------|-----------------|-----|
| 1214 | 10 x 30 | 6 |
| 1215 | 10 x 50 | 6 |
| 1530 | 10 x 80 | 6 |

Use with Thick Tipped Aluminium Pole (Stable)



| | |
|------|------------|
| 1290 | 1,5 m |
| | 8 in a box |



Aluminium Plaster Gage

Used for plaster gauging. It is made of Aluminium and produced in three types for interior, exterior and purposes. There is different lengths 1 m to 6 m.

| Code | Type | Height (m) | Width (cm) | Thickness (mm) |
|------|--------|------------|------------|----------------|
| 1198 | Normal | 1 | 11 | 1,8 |
| 1709 | Normal | 1,5 | 11 | 1,8 |
| 1710 | Normal | 2 | 11 | 1,8 |
| 1711 | Normal | 2,5 | 11 | 1,8 |
| 1712 | Normal | 3 | 11 | 1,8 |
| 1199 | Inner | 1 | 9,8 | 1,5 |
| 1701 | Inner | 1,5 | 9,8 | 1,5 |
| 1702 | Inner | 2 | 9,8 | 1,5 |
| 1703 | Inner | 2,5 | 9,8 | 1,5 |
| 1704 | Inner | 3 | 9,8 | 1,5 |
| 1200 | Outter | 1 | 11,3 | 1,5 |
| 1705 | Outter | 1,5 | 11,3 | 1,5 |
| 1706 | Outter | 2 | 11,3 | 1,5 |
| 1707 | Outter | 2,5 | 11,3 | 1,5 |
| 1708 | Outter | 3 | 11,3 | 1,5 |

- Code: 1198 Normal
- Code: 1199 Inner
- Code: 1200 Outter

1198



1199



1200



POLISHING PADS



For use in polishing and paste applications of surfaces like automobiles, yachts, polyester.

Paste Polishing Sponge (with screw)



| | |
|------|-------------|
| 1803 | 17 cm |
| | 12 in a box |



| | |
|------|-------------|
| 1804 | 9,5 cm |
| | 12 in a box |

Wheel Polishing Sponge

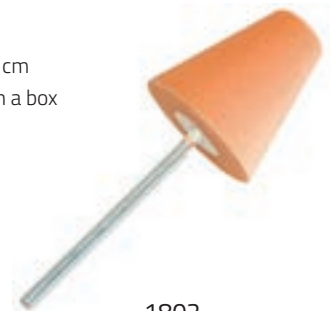
28 cm
6 in a box



1812

Conic Polishing Sponge

26 cm
6 in a box



1802



| | |
|------|-------------|
| 1057 | 15 cm |
| | 12 in a box |



| | |
|------|-------------|
| 1246 | 15 cm |
| | 12 in a box |



Crystal Sponge

| | |
|------|-------------|
| 1058 | 15 cm |
| | 12 in a box |

Used in automotive, yacht, boats and sinks to remove scratches. It is M14 toothed.

Paste Polishing Sponge (with velcro)



| | |
|---------------------------|------------|
| 1070 | 15 cm |
| | 6 in a box |
| Use with 1059. Page 71 | |



(2 in a package)

| | |
|---------------------------|-------------|
| 1060 | 15 cm |
| | 12 in a box |
| Use with 1059. Page 71 | |



| | |
|---------------------------|------------|
| 1242 | 23 cm |
| | 6 in a box |
| Use with 1056. Page 71 | |



Sheepskin Polishing Felt
(with velcro)



| | |
|---------------------------|------------|
| 1055 | 20 cm |
| | 6 in a box |
| Use with 1056. Page 71 | |



| | |
|---------------------------|-------------|
| 1245 | 16 cm |
| | 12 in a box |
| Use with 1243. Page 70 | |



| | |
|---------------------------|-------------|
| 1251 | 12 cm |
| | 12 in a box |
| Use with 1252. Page 70 | |



| | |
|---------------------------|-------------|
| 1255 | 9 cm |
| | 12 in a box |
| Use with 1256. Page 71 | |

Sheepskin Polishing Felt
(with Rope)



| | |
|---------------------------|------------|
| 1054 | 20 cm |
| | 6 in a box |
| Use with 1056. Page 71 | |



| | |
|---------------------------|-------------|
| 1254 | 10 cm |
| | 12 in a box |
| Use with 1256. Page 71 | |

Paste Polish Sponge with Velcro

| | |
|---------------------------|-------------|
| 1247 | 15 cm |
| | 12 in a box |
| Use with 1243. Page 70 | |



Waffle Paste Polishing Sponge with Velcro

| | |
|---------------------------|-------------|
| 1253 | 15 cm |
| | 12 in a box |
| Use with 1243. Page 70 | |

| Code | Height (cm) | Box |
|------|-------------|-----|
| 1054 | 20 | 6 |
| 1055 | 20 | 6 |
| 1057 | 15 | 12 |
| 1058 | 15 | 12 |
| 1060 | 15 | 12 |
| 1070 | 15 | 6 |
| 1242 | 23 | 6 |
| 1245 | 16 | 12 |
| 1246 | 15 | 12 |
| 1247 | 15 | 12 |
| 1251 | 12 | 12 |
| 1253 | 15 | 12 |
| 1254 | 10 | 12 |
| 1255 | 9 | 12 |
| 1802 | 26 | 6 |
| 1803 | 17 | 12 |
| 1804 | 9,5 | 12 |
| 1812 | 28 | 6 |

BACKING PLATES

Backing plates which is attached to angle grinder. Used for works like cleaning the welding remains, metal remains and dust.



Sanding Pad with Velcro



| | |
|--------------------------------|-------------|
| 1243 | 15 cm |
| | 12 in a box |
| Use with 1245,1253. Page 69 | |



| | |
|---------------------------|-------------|
| 1252 | 12 cm |
| | 12 in a box |
| Use with 1251. Page 69 | |

Sanding Pad with Touch - Stick



| | |
|------|-------------|
| 1244 | 15 cm |
| | 12 in a box |



| | |
|------|-------------|
| 1248 | 11,5 cm |
| | 12 in a box |

Used in emery and cleaning works by attaching emery paper under it. 5/16 4 UNF bolted.



Sanding Pad with Air Duct

| | |
|------|-------------|
| 1061 | 15 cm |
| | 12 in a box |



**Sanding Pad with Velcro (Rectangle)
1062**

21 cm / 12 in a box

General purpose plate glued under the emery machine.

Foam Pad



| | |
|---|-------------|
| 1056 | 18,5 cm |
| | 12 in a box |
| Use with 1055, 1242, 1054. Page 68, 69 | |



| | |
|---------------------------------|-------------|
| 1256 | 9 cm |
| | 12 in a box |
| Use with 1254, 1255. Page 69 | |



Foam Pad
Conic Nesnet

| | |
|---------------------------------|-------------|
| 1059 | 12 cm |
| | 12 in a box |
| Use with 1060, 1070. Page 68 | |

Backing Pad



Diamond Foam Pad

| | |
|------|-------------|
| 1357 | 10 cm |
| | 12 in a box |



| | |
|------|-------------|
| 1240 | 17 cm |
| | 12 in a box |



| | |
|------|-------------|
| 1241 | 12 cm |
| | 12 in a box |



Sheepskin Polishing
Set
(1 Felt + 1 Base)

| | |
|------|------------|
| 1815 | 10 cm |
| | 6 in a box |

Sheepskin Marble
Polishing Felt



| | |
|------|-------------|
| 1258 | 18 cm |
| | 12 in a box |



| | |
|------|-------------|
| 1257 | 11 cm |
| | 12 in a box |

| Code | Height (cm) | Box |
|------|-------------|-----|
| 1056 | 18,5 | 12 |
| 1059 | 12 | 12 |
| 1061 | 15 | 12 |
| 1062 | 21 | 12 |
| 1240 | 17 | 12 |
| 1241 | 12 | 12 |
| 1243 | 15 | 12 |
| 1244 | 15 | 12 |
| 1248 | 11,5 | 12 |
| 1252 | 12 | 12 |
| 1256 | 9 | 12 |
| 1257 | 11 | 12 |
| 1258 | 18 | 12 |
| 1357 | 10 | 12 |
| 1815 | 10 | 6 |

SPREADERS

It is used to form flat and smooth surfaces on the areas of application by means of its flexible and silicon structure. It eliminates air bubbles.



Spreader

| | |
|------|----------------|
| 1349 | Height: 3,5 cm |
| | 48 in a box |



Spreader

| | |
|------|----------------|
| 1350 | Height: 5,5 cm |
| | 24 in a box |



Spreader

| | |
|------|--------------|
| 1351 | Height: 7 cm |
| | 24 in a box |



Big Spreader

| | |
|------|---------------|
| 1233 | Height: 13 cm |
| | 12 in a box |



Spreader (with handle)

| | |
|------|----------------|
| 1353 | Height: 5,5 cm |
| | 12 in a box |



Spreader (with handle)

| | |
|------|--------------|
| 1354 | Height: 7 cm |
| | 12 in a box |



Big Spreader (with handle)

| | |
|------|-----------------|
| 1355 | Height: 11,5 cm |
| | 12 in a box |



Spreader (Thick)

| | |
|------|---------------|
| 1230 | Height: 17 cm |
| | 12 in a box |



Spreader (Thin)

| | |
|------|---------------|
| 1231 | Height: 10 cm |
| | 24 in a box |



Curved Spreader

| | |
|------|-----------------|
| 1232 | Height: 11,5 cm |
| | 12 in a box |



Spreader

| | |
|------|-----------------|
| 1352 | Height: 11,5 cm |
| | 12 in a box |



LARGE PAINT BRUSH STAND

| |
|----------------------|
| 1432 |
| Height: 2,2 m |
| Width: 80 cm |
| Depth: 44 cm |
| 3 Box |
| Total of 231 product |



SMALL PAINT BRUSH STAND

| |
|----------------------|
| 1433 |
| Height: 2,2 m |
| Width: 40 cm |
| Depth: 44 cm |
| 3 Box |
| Total of 156 product |

*The part of the stand is free of charge.

*The part of the stand is free of charge.



PAINTER STAND

| |
|----------------------|
| 1313 |
| Height: 2,2 m |
| Width: 80 cm |
| Depth: 44 cm |
| 3 Box |
| Total of 132 product |



20 CM ROLLER STAND

| |
|---------------------|
| 1316 |
| Height: 2,2 m |
| Width: 40 cm |
| Depth: 44 cm |
| 3 Box |
| Total of 90 product |

PAINT AND HADWARE STAND

| |
|----------------------|
| 1218 |
| Height: 2,2 m |
| Width: 120 cm |
| Depth: 44 cm |
| 4 Box |
| Total of 107 product |



25 CM ROLLER STAND

| |
|---------------------|
| 1317 |
| Height: 2,2 m |
| Width: 40 cm |
| Depth: 44 cm |
| 3 Box |
| Total of 89 product |

*The part of the stand is free of charge.



POINT STAND

| |
|----------------------|
| 1318 |
| Height: 2,2 m |
| Width: 60 cm |
| Depth: 44 cm |
| 3 Box |
| Total of 132 product |

MIXER STAND

| |
|---------------------|
| 1319 |
| Height: 2,2 m |
| Width: 40 cm |
| Depth: 44 cm |
| 4 Box |
| Total of 48 product |



POLE STAND

| |
|---------------------|
| 1315 |
| Height: 65 cm |
| Width: 46 cm |
| Depth: 40 cm |
| 4 Box |
| Total of 48 product |



*The part of the stand is free of charge.

*The part of the stand is free of charge.



CLEANING STAND

| |
|---------------------|
| 1434 |
| Height: 2,2 m |
| Width: 80 cm |
| Depth: 44 cm |
| 4 Box |
| Total of 53 product |



DECORATION STAND

| |
|----------------------|
| 1312 |
| Height: 2,2 m |
| Width: 120 cm |
| Depth: 44 cm |
| 4 Box |
| Total of 159 product |



SCRAPER STAND

| |
|----------------------|
| 1428 |
| Height: 2,2 m |
| Width: 80 cm |
| Depth: 44 cm |
| 4 Box |
| Total of 100 product |



EPOXY STAND

| |
|---------------------|
| 1431 |
| Height: 2,2 m |
| Width: 40 cm |
| Depth: 44 cm |
| 4 Box |
| Total of 56 product |



AUTOCLAVED AERATED CONCRETE PRODUCT STAND

| |
|---------------------|
| 1435 |
| Height: 2,2 m |
| Width: 40 cm |
| Depth: 44 cm |
| 4 Box |
| Total of 49 product |

*The part of the stand is free of charge.

*The part of the stand is free of charge.



MARINE STAND

| |
|----------------------|
| 1427 |
| Height: 2,2 m |
| Width: 80 cm |
| Depth: 44 cm |
| 4 Box |
| Total of 120 product |

AUTOMOTIVE STAND

| |
|----------------------|
| 1429 |
| Height: 2,2 m |
| Width: 80 cm |
| Depth: 44 cm |
| 4 Box |
| Total of 176 product |

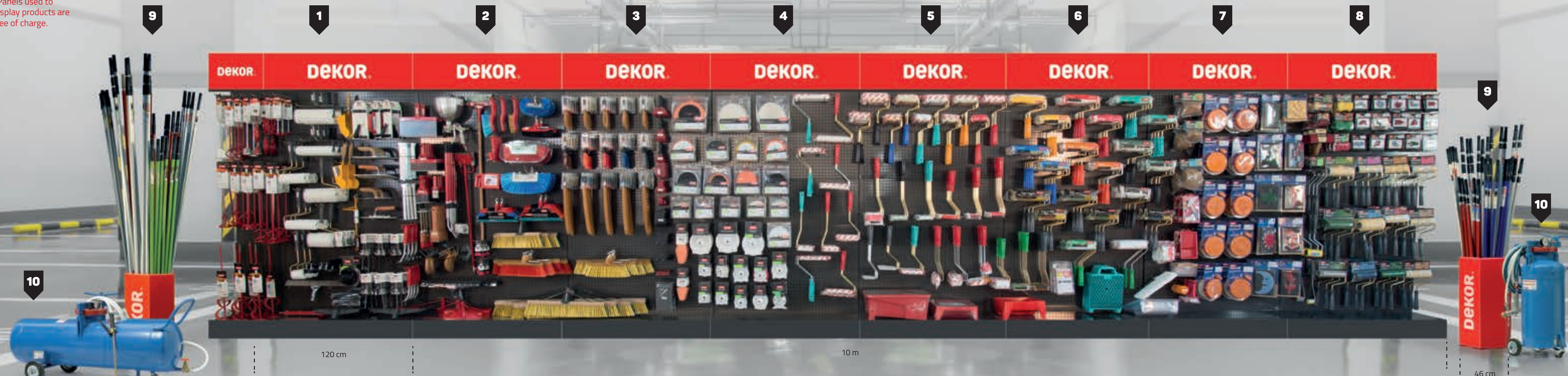


DEKOR GENERAL PRODUCT STAND

1314

Height: 2,2 m
Width: 10 m
Depth: 44 cm
Total of 1180 Product

*Panels used to display products are free of charge.



Dekor General Product Stand includes 208 main products covering 1180 items in different sizes and models. The range consisting of 9 vertical boards 2 paned rod rails covers almost all Dekor products. Dealers having this exhibition range in their stores will support the sales in their region by enriching the product content. Moreover; product demands received from the regions in our company will be directed to the dealers having this range in their stores and they will also benefit. Exhibition range can be either used in whole or distributed in the store depending on the panel ranges. Prices of this exhibition range are determined depending on the list prices of the products it covers. Panels used to display products are free of charge.

Only applies to rod rails.
Covers a wider space when rods are added.

Dekor General Product List

| Code | Product | Unit |
|------|---------|------|
|------|---------|------|

no.1

Epoxi Stand *69 Product*

| | | |
|------|---|---|
| 1126 | Epoxi Nailed Shoes | 2 |
| 1127 | Epoxi Stage Trowel | 1 |
| 1140 | Adjustable Epoxi Stage Trowel | 1 |
| 1226 | Spiked Roller (Small Diameter) ø 10 cm | 3 |
| 1220 | Spiked Roller (Small Diameter) ø 20 cm | 3 |
| 1221 | Spiked Roller (Small Diameter) ø 25 cm | 3 |
| 1222 | Spiked Roller (Small Diameter) ø 30 cm | 3 |
| 1223 | Spiked Roller (Large Diameter) ø 20 cm | 2 |
| 1224 | Spiked Roller (Large Diameter) ø 25 cm | 3 |
| 1225 | Spiked Roller (Large Diameter) ø 30 cm | 3 |
| 1208 | Mixer Head ø 14 cm | 2 |
| 1209 | Mixer Head ø 9 cm | 3 |
| 1510 | Mixer Head ø 6,5 cm | 3 |
| 1511 | Auger Mixer Head ø 4 cm | 3 |
| 1512 | Mixer Head (Plastic) ø 8 cm | 3 |
| 1513 | Butterfly Mixer Head ø 10 cm | 3 |
| 1514 | Mixer Head ø 9 cm | 3 |
| 1515 | Mixer Head ø 6 cm | 3 |
| 1516 | Mixer Head ø 4 cm | 3 |
| 1517 | Mixer Head ø 14 cm (M14) | 2 |
| 1518 | Mixer Head ø 14 cm (SDS Plus) | 2 |
| 1519 | Mixer Head ø 8,5 cm (SDS Plus) | 3 |
| 1520 | Mixer Head ø 6 cm | 3 |
| 1713 | Butterfly Mixer Head ø 10 cm (SDS Plus) | 3 |
| 1714 | Mixer Head ø 9 cm (SDS Plus) | 3 |
| 1715 | Mixer Head ø 6 cm (SDS Plus) | 3 |

no.2

Scrapers Stand *128 Product*

| | | |
|------|--------------------------------|---|
| 1201 | Bended Scraper 35x6 cm | 4 |
| 1216 | Bended Scraper 35x4 cm (Small) | 4 |
| 1204 | Wood Handle Scraper | 4 |
| 1211 | Triangular Scraper | 4 |
| 1529 | Aluminium Scraper | 4 |
| 1532 | Aluminium Grip Scraper 7 cm | 4 |
| 1205 | Scraper 30 cm | 3 |
| 1203 | Scraper 20 cm | 5 |
| 1202 | Scraper 10 cm | 5 |
| 1217 | Scraper 5 cm | 5 |
| 1236 | Scraper Wood Handle 20 cm | 1 |
| 1206 | Hand Sander | 3 |
| 1207 | Pole Hand Sander | 3 |
| 1507 | Pole Hand Sander 11x23 cm | 3 |

| Code | Product | Unit |
|------|---------|------|
|------|---------|------|

| Code | Product | Unit |
|------|---------|------|
|------|---------|------|

| | | |
|------|---------------------------------------|---|
| 1186 | Trowel with Wood Handle | 2 |
| 1187 | Plastic Trowel | 2 |
| 073 | Silk Plastic Trowel 10x28 cm | 2 |
| 1189 | Round Plastic Trowel 26 cm | 1 |
| 1212 | Stainless Inner Corner Trowel | 3 |
| 1213 | Stainless Outer Corner Trowel | 3 |
| 1210 | Rubber Wiper 42,5 cm | 1 |
| 1410 | Rubber Wiper 52,5 cm | 1 |
| 1249 | Metal Wiper 40 cm | 1 |
| 1250 | Metal Wiper 60 cm | 1 |
| 1214 | Mortar Rake 30 cm | 1 |
| 1215 | Mortar Rake 50 cm | 1 |
| 1530 | Mortar Rake 80 cm | 1 |
| 1414 | Plastic Rake 35 cm | 1 |
| 1415 | Plastic Rake 50 cm | 1 |
| 1234 | Rubber Hand Sander 21 cm | 4 |
| 1235 | Ergonomic Hand Sander | 2 |
| 1380 | Strip Disc Tool | 4 |
| 1381 | Strip Disc Tool 5 cm | 4 |
| 1541 | Styrofoam Punch 8 mm | 3 |
| 1547 | Styrofoam Punch 8 mm SDS | 3 |
| 1542 | Styrofoam Punch 10 mm | 3 |
| 1543 | Styrofoam Punch 10 mm SDS | 3 |
| 1544 | Styrofoam Punch 12 mm | 3 |
| 1545 | Styrofoam Punch 12 mm SDS | 3 |
| 1540 | Styrofoam Punch 8 mm | 6 |
| 1546 | Styrofoam Punch Spare 8 mm | 6 |
| 1531 | Aluminium Scraper | 4 |
| 1301 | Scraper with Blast Pipe | 1 |
| 1306 | Exterior Surface Acrylic Spraying Gun | 1 |
| 2545 | Aerated Concrete Shovel 10,5 cm | 1 |
| 2546 | Aerated Concrete Shovel 13,5 cm | 1 |
| 2547 | Aerated Concrete Shovel 15,5 cm | 1 |
| 2550 | Aerated Concrete Trencher 45 cm | 1 |

no.3

Brush Stand *160 Product*

| | | |
|------|-------------------------------|---|
| 6000 | Chip Paint Brushes20 mm | 2 |
| 6001 | Chip Paint Brushes40 mm | 2 |
| 6002 | Chip Paint Brushes60 mm | 2 |
| 6003 | Chip Paint Brushes80 mm | 2 |
| 6004 | Chip Paint Brushes100 mm | 2 |
| 6010 | Chip Robot Paint Brush 20 mm | 1 |
| 6011 | Chip Robot Paint Brush 40 mm | 1 |
| 6012 | Chip Robot Paint Brush 60 mm | 1 |
| 6013 | Chip Robot Paint Brush 80 mm | 1 |
| 6014 | Chip Robot Paint Brush 100 mm | 1 |
| 6020 | Chip Reach Brushes 20 mm | 2 |

| Code | Product | Unit |
|------|---------|------|
|------|---------|------|

| Code | Product | Unit |
|------|---------|------|
|------|---------|------|

| | | |
|------|-------------------------------------|---|
| 6021 | Chip Reach Brushes 40 mm | 2 |
| 6022 | Chip Reach Brushes 60 mm | 2 |
| 6023 | Chip Reach Brushes 80 mm | 2 |
| 6024 | Chip Reach Brushes 100 mm | 2 |
| 6030 | Extra Chip Paint Brush 20 mm | 2 |
| 6031 | Extra Chip Paint Brush 40 mm | 2 |
| 6032 | Extra Chip Paint Brush 60 mm | 2 |
| 6033 | Extra Chip Paint Brush 80 mm | 2 |
| 6034 | Extra Chip Paint Brush 100 mm | 2 |
| 6041 | Extra Chip Robot Paint Brush 40 mm | 1 |
| 6042 | Extra Chip Robot Paint Brush 60 mm | 1 |
| 6043 | Extra Chip Robot Paint Brush 80 mm | 1 |
| 6044 | Extra Chip Robot Paint Brush 100 mm | 1 |
| 6050 | Extra Chip Reach Brush 20 mm | 2 |
| 6051 | Extra Chip Reach Brush 40 mm | 2 |
| 6052 | Extra Chip Reach Brush 60 mm | 2 |
| 6053 | Extra Chip Reach Brush 80 mm | 2 |
| 6054 | Extra Chip Reach Brush 100 mm | 2 |
| 6060 | Oil Paint Brush 20 mm | 2 |
| 6061 | Oil Paint Brush 40 mm | 2 |
| 6062 | Oil Paint Brush 60 mm | 2 |
| 6063 | Oil Paint Brush 80 mm | 2 |
| 6064 | Oil Paint Brush 100 mm | 2 |
| 6070 | Oil Paint Robot Brush 20 mm | 1 |
| 6071 | Oil Paint Robot Brush 40 mm | 1 |
| 6072 | Oil Paint Robot Brush 60 mm | 1 |
| 6073 | Oil Paint Robot Brush 80 mm | 1 |
| 6074 | Oil Paint Robot Brush 100 mm | 1 |
| 6080 | Oil Paint Reach Brush 20 mm | 2 |
| 6081 | Oil Paint Reach Brush 40 mm | 2 |
| 6082 | Oil Paint Reach Brush 60 mm | 2 |
| 6083 | Oil Paint Reach Brush 80 mm | 2 |
| 6084 | Oil Paint Reach Brush 100 mm | 2 |
| 6200 | Soft Wire Brush | 2 |
| 6201 | Hard Wire Brush | 2 |
| 6220 | Auto Washing Brush | 2 |
| 6221 | Extra Auto Washing Brush | 2 |
| 6230 | Extra Marine Washing Brush | 2 |
| 6231 | Marine Washing Brush | 2 |
| 6240 | Carpet Cleaning Brush | 2 |
| 6250 | Plastic Sweeping Yard Brush 30 cm | 1 |
| 6251 | Plastic Sweeping Yard Brush 40 cm | 1 |
| 6252 | Plastic Sweeping Yard Brush 50 cm | 1 |
| 6253 | Plastic Sweeping Yard Brush 60 cm | 1 |
| 6260 | Wooden Sweeping Yard Brush 30 cm | 1 |
| 6261 | Wooden Sweeping Yard Brush 40 cm | 1 |
| 6262 | Wooden Sweeping Yard Brush 50 cm | 1 |

| Code | Product | Unit |
|------|---------|------|
|------|---------|------|

| Code | Product | Unit |
|------|---------|------|
|------|---------|------|

| | | |
|------|-----------------------------------|---|
| 6263 | Wooden Sweeping Yard Brush 60 cm | 1 |
| 6264 | Wooden Sweeping Yard Brush 80 cm | 1 |
| 6265 | Wooden Sweeping Yard Brush 100 cm | 1 |
| 6266 | Wooden Sweeping Yard Brush 120 cm | 1 |
| 6270 | Multi-Purpose Scrubbing Brush | 2 |
| 6280 | Hand Brush | 2 |
| 6290 | Plastic Sweeping Brush 30 cm | 1 |
| 6291 | Plastic Sweeping Brush 40 cm | 1 |
| 6292 | Plastic Sweeping Brush 50 cm | 1 |
| 6293 | Plastic Sweeping Brush 60 cm | 1 |
| 6100 | Synthetic Paint Brush | 2 |
| 6101 | Synthetic Paint Brush | 2 |
| 6102 | Synthetic Paint Brush | 2 |
| 6103 | Synthetic Paint Brush | 2 |
| 6104 | Synthetic Paint Brush | 2 |
| 6110 | Synthetic Robot Paint Brush | 1 |
| 6111 | Synthetic Robot Paint Brush | 1 |
| 6112 | Synthetic Robot Paint Brush | 1 |
| 6113 | Synthetic Robot Paint Brush | 1 |
| 6114 | Synthetic Robot Paint Brush | 1 |
| 6120 | Synthetic Paint Reach Brush | 2 |
| 6121 | Synthetic Paint Reach Brush | 2 |
| 6122 | Synthetic Paint Reach Brush | 2 |
| 6123 | Synthetic Paint Reach Brush | 2 |
| 6124 | Synthetic Paint Reach Brush | 2 |
| 6130 | Synthetic Varnish Brush | 2 |
| 6131 | Synthetic Varnish Brush | 2 |
| 6132 | Synthetic Varnish Brush | 2 |
| 6133 | Synthetic Varnish Brush | 2 |
| 6134 | Synthetic Varnish Brush | 2 |
| 6140 | Synthetic Varnish Robot Brush | 1 |
| 6141 | Synthetic Varnish Robot Brush | 1 |
| 6142 | Synthetic Varnish Robot Brush | 1 |
| 6143 | Synthetic Varnish Robot Brush | 1 |
| 6144 | Synthetic Varnish Robot Brush | 1 |
| 6150 | Synthetic Varnish Reach Brush | 2 |
| 6151 | Synthetic Varnish Reach Brush | 2 |
| 6152 | Synthetic Varnish Reach Brush | 2 |
| 6153 | Synthetic Varnish Reach Brush | 2 |
| 6154 | Synthetic Varnish Reach Brush | 2 |
| 6271 | El ovalama fırçası | 2 |

no.4

Automotive Stand *183 Product*

| | | |
|------|--|---|
| 1054 | Sheepskin Polishing Felt with Rope 20 cm | 3 |
| 1254 | Sheepskin Polishing Felt with Rope 10 cm | 4 |
| 1245 | Sheepskin Polishing Felt with Velcro 16 cm | 4 |
| 1251 | Sheepskin Polishing Felt with Velcro 12 cm | 4 |

| Code | Product | Unit |
|------|---------|------|
|------|---------|------|

| Code | Product | Unit |
|------|---------|------|
|------|---------|------|

| | | |
|------|--|----|
| 1255 | Sheepskin Polishing Felt with Velcro 9 cm | 4 |
| 1055 | Sheepskin Polishing Felt with Velcro 20 cm | 3 |
| 1058 | Crystal Sponge | 3 |
| 1246 | Paste Polishing Sponge 15 cm | 3 |
| 1247 | Paste Polish Sponge with Velcro 15 cm | 3 |
| 1253 | Waffle Paste Polishing Sponge 15 cm | 4 |
| 1803 | Orange Paste Polishing Sponge 17 cm | 3 |
| 1057 | Orange Paste Polishing Sponge 15 cm | 3 |
| 1804 | Orange Paste Polishing Sponge 9,5 cm | 3 |
| 1070 | Paste Polishing Sponge | 3 |
| 1060 | Paste Polishing Sponge (2 in package) | 3 |
| 1242 | Paste Polishing Sponge with Velcro | 3 |
| 1802 | Conic Polishing Sponge | 2 |
| 1812 | Whell Polishing Sponge | 2 |
| 1243 | Sanding Pad with Velcro 15 cm | 3 |
| 1252 | Sanding Pad with Velcro 12 cm | 4 |
| 1244 | Sanding Pad with touch-stick 15 cm | 3 |
| 1248 | Sanding Pad with touch-stick 11,5 cm | 4 |
| 1061 | Sanding Pad with Air Duct | 4 |
| 1062 | Sanding Pad (Rectangle) | 4 |
| 1056 | Foam Pad 18,5 cm | 4 |
| 1256 | Foam Pad 9 cm | 4 |
| 1059 | Foam Pad Conic Nesnet 12 cm | 4 |
| 1240 | Backing Pad (Large) 17 cm | 3 |
| 1241 | Backing Pad (Small) 12 cm | 3 |
| 1257 | Sheepskin Marble Polishing Felt 11 cm | 4 |
| 1258 | Sheepskin Marble Polishing Felt 18 cm | 3 |
| 1357 | Diamond Foam Pad 10 cm | 4 |
| 1815 | Sheepskin Polishing Set 10 cm | 3 |
| 1230 | Spreader 17 cm (Large) | 6 |
| 1231 | Spreader 10 cm (Small) | 12 |
| 1232 | Spreader 11,5 cm (Curved) | 6 |
| 1233 | Spreader 13 cm | 6 |
| 1349 | Spreader 3,5 cm | 6 |
| 1350 | Spreader 5,5 cm | 6 |
| 1351 | Spreader 7 cm | 6 |
| 1352 | Spreader 11,5 cm | 6 |
| 1353 | Spreader 5,5 cm | 6 |
| 1354 | Spreader 7 cm | 6 |
| 1355 | Spreader 11,5 cm | 6 |

no.5

Roller Stand *123 Product*

| | | |
|------|------------------------------|---|
| 1113 | Sponge Roller 23 cm | 3 |
| 1112 | Sponge Roller 20 cm | 4 |
| 1114 | Sponge Roller 10 cm | 4 |
| 1115 | Sponge Radiator Sleeve 10 cm | 6 |

| Code | Product | Unit |
|------|---------|------|
|------|---------|------|

| Code | Product | Unit |
|------|---------|------|
|------|---------|------|

| | | |
|------|--|----|
| 1111 | Sponge Radiator Sleeve 5 cm | 5 |
| 1116 | Foam Coral Roller 20 cm | 3 |
| 1129 | Foam Roller With Cavities 25 cm | 3 |
| 1117 | Foam Roller With Cavities 20 cm | 3 |
| 1118 | Foam Roller with Naps 20 cm | 3 |
| 1122 | Foam Roller with Naps 25 cm | 3 |
| 1123 | Foam Radiator Roller with Naps 10 cm | 6 |
| 1161 | Aluminium Crushing Roller 13 cm | 5 |
| 1160 | Aluminium Crushing Roller 8 cm | 5 |
| 1182 | Hobby Paint Set | 4 |
| 1188 | Robot Brush | 5 |
| 1390 | Paint Paddle Sticks | 6 |
| 1391 | Paint Paddle Sticks (Perforated) | 6 |
| 1392 | Paint Cup | 3 |
| 2084 | Eksport Robot Roller 10 cm | 6 |
| 2100 | Eksport Radiator Roller Sleeve 12 in a package | 3 |
| 3100 | Eksport Radiator Roller Sleeve 3 in a package | 8 |
| 4100 | Eksport Radiator Roller Sleeve Set | 6 |
| 1183 | Paint Tray Liner | 10 |
| 1185 | Paint Roller Grid | 24 |
| 1190 | Amateur Painter Set | 2 |
| 1180 | Paint Tray - Large Size | 2 |
| 1181 | Paint Tray - Small Size | 10 |

no.6

Roller Stand *169 Product*

| | | |
|------|---------------------------------|---|
| 1003 | Superluks Roller | 4 |
| 1001 | Superluks Roller 20 cm | 4 |
| 1004 | Superluks Roller 15 cm | 4 |
| 1005 | Superluks Roller 10 cm | 4 |
| 1012 | Silteks Rulo 25 cm | 4 |
| 1010 | Silteks Rulo 20 cm | 4 |
| 1017 | Plasdek Roller 25 cm | 4 |
| 1015 | Plasdek Roller 20 cm | 4 |
| 1018 | Plasdek Roller 15 cm | 4 |
| 1019 | Plasdek Roller 10 cm | 4 |
| 1036 | Sheepskin Roller 25 cm | 3 |
| 1035 | Sheepskin Roller 20 cm | 3 |
| 1037 | Sheepskin Roller 15 cm | 4 |
| 1038 | Sheepskin Roller 10 cm | 4 |
| 1039 | Sheepskin Radiator Roller 10 cm | 6 |
| 1040 | Extra Sheepskin Roller 20 cm | 3 |
| 1064 | Velvet Roller 25 cm | 4 |
| 1065 | Velvet Roller 20 cm | 4 |
| 1066 | Velvet Roller 10 cm | 4 |
| 1067 | Velvet Roller 15 cm | 4 |
| 2085 | Velvet Radiator Roller 25 cm | 2 |
| 2093 | Velvet Radiator Roller 20 cm | 2 |

| Code | Product | Unit |
|------|---------|------|
|------|---------|------|

| Code | Product | Unit |
|------|---------|------|
|------|---------|------|

| | | |
|------|--------------------------------|---|
| 1069 | Velvet Radiator Roller 15 cm | 6 |
| 1068 | Velvet Radiator Roller 10 cm | 6 |
| 3106 | Velvet Mid-size Roller 25 cm | 4 |
| 3105 | Velvet Mid-size Roller 20 cm | 2 |
| 3103 | Velvet Mid-size Roller 15 cm | 2 |
| 3101 | Velvet Mid-size Roller 10 cm | 2 |
| 1081 | Eksport Roller 25 cm | 4 |
| 1080 | Eksport Roller 20 cm | 4 |
| 1082 | Eksport Roller 15 cm | 4 |
| 1083 | Eksport Roller 10 cm | 4 |
| 2086 | Eksport Radiator Roller 25 cm | 4 |
| 2083 | Eksport Radiator Roller 20 cm | 4 |
| 1085 | Eksport Radiator Roller 15 cm | 6 |
| 1084 | Eksport Radiator Roller 10 cm | 6 |
| 1087 | Eksport Radiator Roller 7,5 cm | 6 |
| 1086 | Eksport Corner Roller | 3 |
| 1088 | Eksport Tube Roller | 3 |
| 3116 | Eksport Mid-size Roller 25 cm | 4 |
| 3115 | Eksport Mid-size Roller 20 cm | 4 |
| 3113 | Eksport Mid-size Roller 15 cm | 4 |
| 3111 | Eksport Mid-size Roller 10 cm | 4 |

no.7

Effect Stand *81 Product*

| | | |
|------|--------------------------------------|---|
| 1473 | Natural Coral Effect Sponge (Small) | 3 |
| 1474 | Natural Coral Effect Sponge (Medium) | 3 |
| 1475 | Natural Coral Effect Sponge (Large) | 3 |
| 1526 | Sycamore Leaf Stamp | 3 |
| 1527 | Ivy Stamp | 3 |
| 1528 | Linden Leaf Stamp | 3 |
| 1533 | Star Decorative Stamp | 3 |
| 1534 | Large Moon Stamp | 3 |
| 1535 | Large Sun Stamp | 3 |
| 1536 | Large Tulip Stamp | 3 |
| 1537 | Large Double Tulip Stamp | 3 |
| 1538 | Large Rose Stamp | 3 |
| 1550 | Ringed Roller | 4 |
| 1551 | Brick Effect Roller 20 cm | 3 |
| 1552 | Balloon Effect Roller 20 cm | 3 |
| 1553 | Checker Effect Roller 20 cm | 3 |
| 1554 | Rush Mate Effect Roller 20 cm | 3 |
| 1556 | Heart Effect Roller 20 cm | 3 |
| 1555 | Effect Spatula | 6 |
| 1560 | Jasmine Wall Stamp Set | 1 |
| 1561 | Tulip Pattern Wall Stamp Set | 1 |
| 1562 | Violet Wall Stamp Set | |



Dekor Rulo Fırça Sanayi ve Limited Şirketi reserves the rights to modify or upgrade the products, codes and product specifications without notice.

Products are manufactured in Dekor facilities.

dekor.com info@dekor.com

